

Report for DMBC

Time range: 01/12/2009 00:00:01 - 31/12/2009 23:59:47

Generated on Mon Jan 04, 2010 - 12:07:01

General Statistics

Summary

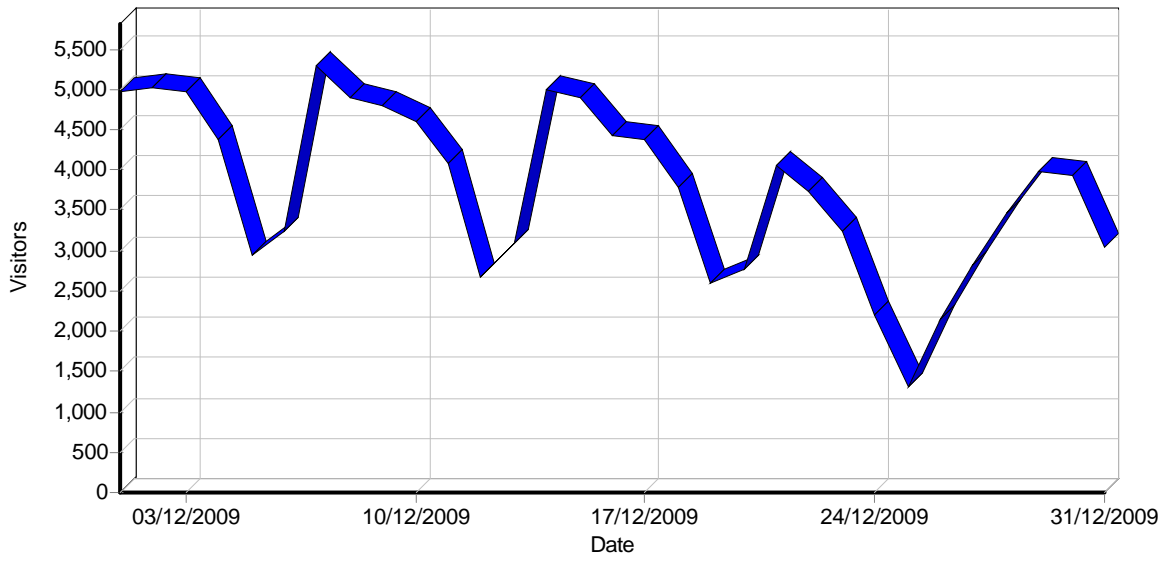
Summary

| Hits | |
|--------------------------------|-----------|
| Total Hits | 4,146,134 |
| Visitor Hits | 3,605,031 |
| Spider Hits | 541,103 |
| Average Hits per Day | 133,746 |
| Average Hits per Visitor | 30.87 |
| Cached Requests | 763,298 |
| Failed Requests | 469,334 |
| Page Views | |
| Total Page Views | 1,021,304 |
| Average Page Views per Day | 32,945 |
| Average Page Views per Visitor | 8.75 |
| Visitors | |
| Total Visitors | 116,774 |
| Average Visitors per Day | 3,766 |
| Total Unique IPs | 62,951 |
| Bandwidth | |
| Total Bandwidth | 0 B |
| Visitor Bandwidth | 0 B |
| Spider Bandwidth | 0 B |
| Average Bandwidth per Day | 0 B |
| Average Bandwidth per Hit | 0 B |
| Average Bandwidth per Visitor | 0 B |

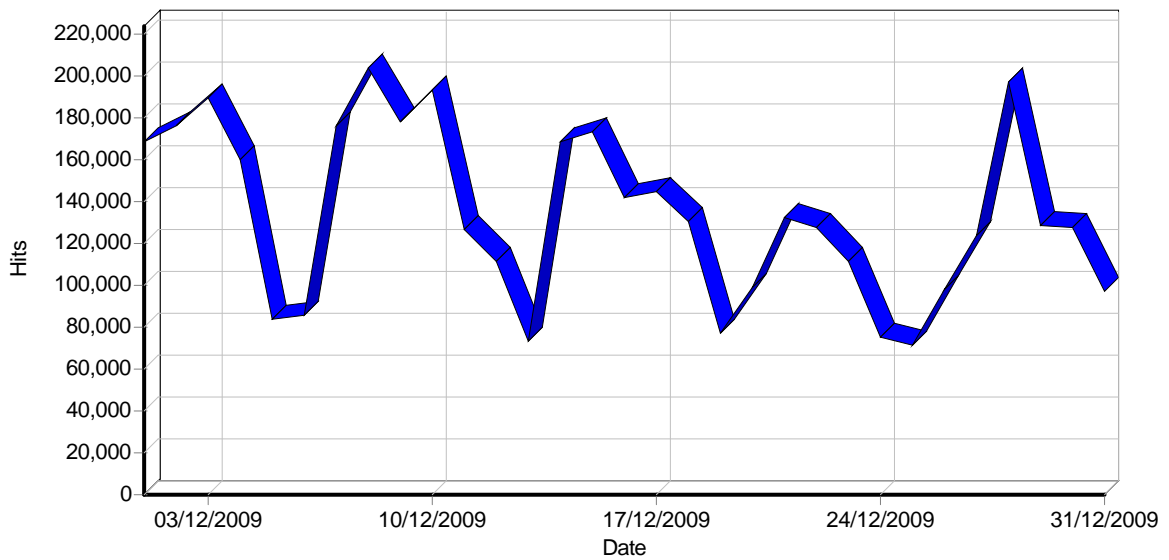
Activity Statistics

Daily

Daily Visitors



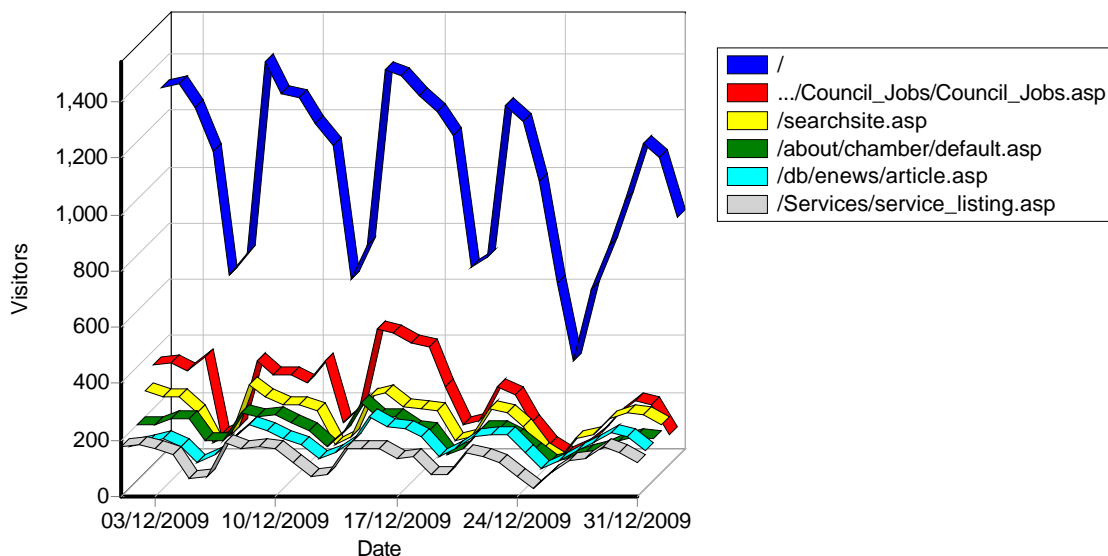
Daily Hits



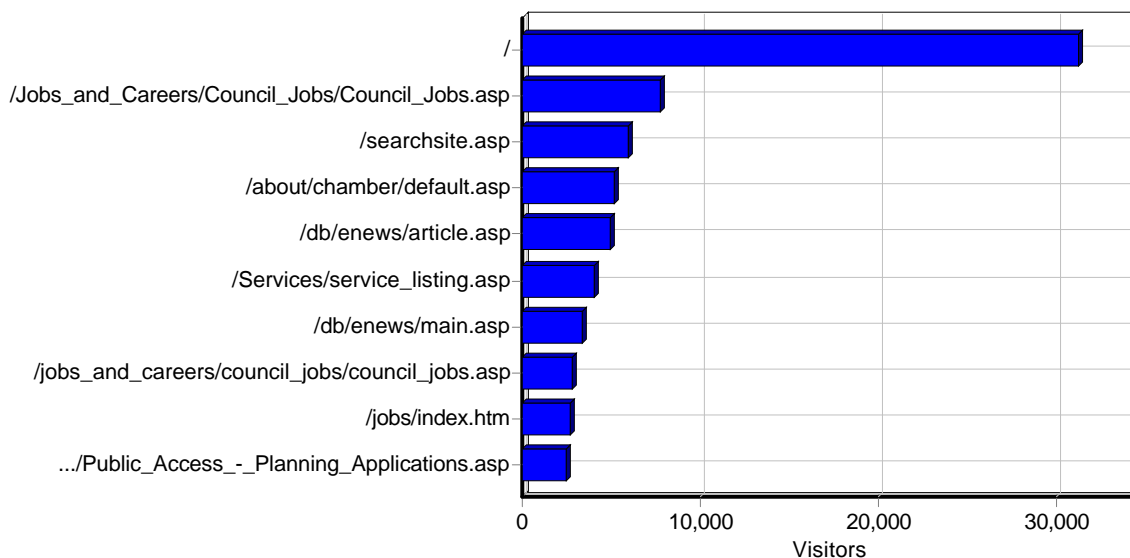
Access Statistics

Pages

Daily Page Access



Most Popular Pages



Most Popular Pages

| | Page | Hits | Visitors |
|---|---|--------|----------|
| 1 | Doncaster Council - General Enquiries + 44 (0)1302 736000 http://www.doncaster.gov.uk/ | 81,072 | 31,308 |
| 2 | Council Jobs http://www.doncaster.gov.uk/Jobs_and_Careers/Council_Jobs/Council_Jobs.asp | 9,382 | 7,716 |
| 3 | Search http://www.doncaster.gov.uk/searchsite.asp | 12,383 | 6,007 |
| 4 | The Council Chamber http://www.doncaster.gov.uk/about/chamber/default.asp | 20,706 | 5,215 |
| 5 | Doncaster's eNews http://www.doncaster.gov.uk/db/enews/article.asp | 26,212 | 4,971 |
| 6 | Service Listing http://www.doncaster.gov.uk/Services/service_listing.asp | 11,877 | 4,037 |
| 7 | Doncaster's eNews http://www.doncaster.gov.uk/db/enews/main.asp | 6,554 | 3,390 |
| 8 | Council Jobs http://www.doncaster.gov.uk/jobs_and_careers/council_jobs/council_jobs.asp | 3,266 | 2,820 |
| 9 | Council Jobs http://www.doncaster.gov.uk/jobs/index.htm | 4,615 | 2,656 |

| | | | |
|----|--|-------|-------|
| 10 | Public Access - Planning Applications http://www.doncaster.gov.uk/Living_in_Doncaster/Neighbourhoods/Planning/plan_public_access/Public_Access_-_Planning_Applications.asp | 4,577 | 2,433 |
| 11 | Doncaster Metropolitan Borough Council Payments Online http://www.doncaster.gov.uk/paymentsonline/ | 2,844 | 2,308 |
| 12 | Environment http://www.doncaster.gov.uk/Living_in_Doncaster/Environment/Environment.asp | 2,901 | 2,236 |
| 13 | Doncaster Metropolitan Borough Council Payments Online http://www.doncaster.gov.uk/paymentsonline/index.htm | 2,536 | 2,215 |
| 14 | My Doncaster http://www.doncaster.gov.uk/My_Doncaster/My_Doncaster.asp | 3,156 | 2,212 |
| 15 | Jobs and Careers http://www.doncaster.gov.uk/Jobs_and_Careers/Jobs_and_Careers.asp | 2,748 | 2,084 |
| 16 | Payments http://www.doncaster.gov.uk/Living_in_Doncaster/Payments/payments.asp | 2,696 | 2,034 |
| 17 | Bank Holiday Recycling and Refuse Collections http://www.doncaster.gov.uk/Living_in_Doncaster/Environment/Recycling_Rubbish_and_Waste/Wheeled_Bin_Collections/Recycling_and_Refuse_Collections.asp | 2,358 | 1,951 |
| 18 | http://www.doncaster.gov.uk/Images/ | 3,601 | 1,713 |
| 19 | A-Z - Stage 1 Doncaster Council http://www.doncaster.gov.uk/atoz.asp | 7,611 | 1,563 |
| 20 | Green and Black Wheeled Bin Collections http://www.doncaster.gov.uk/Living_in_Doncaster/Environment/Recycling_Rubbish_and_Waste/Wheeled_Bin_Collections/Green_and_Black_Wheeled_Bin_Collections.asp | 2,123 | 1,459 |
| 21 | A-Z - Stage 2 Doncaster Council http://www.doncaster.gov.uk/atoz2.asp | 7,791 | 1,410 |
| 22 | Learning in Doncaster http://www.doncaster.gov.uk/Learning_in_Doncaster/Learning_in_Doncaster.asp | 1,744 | 1,377 |
| 23 | School Holiday Pattern 2009/10 http://www.doncaster.gov.uk/Learning_in_Doncaster/pupil_and_parent/Holidays/School_Holiday_Pattern_2009-10.asp | 1,531 | 1,310 |
| 24 | Council Jobs http://www.doncaster.gov.uk/jobs/ | 2,891 | 994 |
| 25 | Living in Doncaster http://www.doncaster.gov.uk/Living_in_Doncaster/Living_in_Doncaster.asp | 1,191 | 939 |
| 26 | Leisure in Doncaster http://www.doncaster.gov.uk/Leisure_in_Doncaster/Leisure_in_Doncaster.asp | 1,063 | 903 |
| 27 | Car Parking in Doncaster http://www.doncaster.gov.uk/Living_in_Doncaster/highways_streets_transport/Parking_Services/Car_Parking_in_Doncaster.asp | 1,679 | 902 |
| 28 | Weather Doncaster Council http://www.doncaster.gov.uk/Today_in_Doncaster/Weather/Weather.asp | 949 | 878 |
| 29 | Contact Us http://www.doncaster.gov.uk/Have_your_say/Contact_the_Council/Contact_Us.asp | 1,090 | 861 |
| 30 | Planning http://www.doncaster.gov.uk/Living_in_Doncaster/Neighbourhoods/Planning/Planning_and_Building_Control.asp | 1,091 | 848 |
| 31 | The Council Chamber http://www.doncaster.gov.uk/about/chamber/ | 1,039 | 824 |
| 32 | Weather Detail Doncaster Council http://www.doncaster.gov.uk/today_in_doncaster/weather/weatherdetail.asp | 841 | 799 |
| 33 | School Holiday Pattern 2010/11 http://www.doncaster.gov.uk/Learning_in_Doncaster/pupil_and_parent/Holidays/School_Holiday_Pattern_2010-11.asp | 1,016 | 791 |
| 34 | Recycle Christmas http://www.doncaster.gov.uk/Living_in_Doncaster/Environment/Recycling_Rubbish_and_Waste/Recycling/Recycle_Christmas/Recycle_Christmas.asp | 1,084 | 787 |
| 35 | Mayor Peter Davies homepage http://www.doncaster.gov.uk/mayor/ | 1,090 | 783 |
| 36 | Welcome to the Civic Theatre http://www.doncaster.gov.uk/Leisure_in_Doncaster/Arts_and_Culture/Civic_theatre/civic_theatre.asp | 920 | 783 |
| 37 | Doncaster Market http://www.doncaster.gov.uk/leisure_in_doncaster/shopping/markets/doncaster_markets.asp | 901 | 758 |
| 38 | Household Waste Recycling Centres http://www.doncaster.gov.uk/Living_in_Doncaster/Environment/Recycling_Rubbish_and_Waste/recycling_facilities/Household_Waste_Recycling_Centres.asp | 866 | 733 |
| 39 | Council Tax http://www.doncaster.gov.uk/Living_in_Doncaster/Homes_and_Housing/Council_Tax/Council_Tax.asp | 818 | 718 |
| 40 | Health and Social Care http://www.doncaster.gov.uk/Health_and_Social_Care/Health_and_Social_Care.asp | 891 | 712 |
| 41 | Highways, Streets and Transport http://www.doncaster.gov.uk/Living_in_Doncaster/highways_streets_transport/Highways_Streets_and_Transport.asp | 867 | 705 |

| | | | |
|----|---|-------|-----|
| 42 | Armthorpe Sports Centre http://www.doncaster.gov.uk/Leisure_in_Doncaster/Sports_and_games/Sports_and_leisure_centres/Armthorpe_Sports_Centre/Armthorpe_Sports_Centre.asp | 1,357 | 699 |
| 43 | Jobs and Careers http://www.doncaster.gov.uk/jobs_and_careers/jobs_and_careers.asp | 860 | 685 |
| 44 | Sports and Leisure Centres http://www.doncaster.gov.uk/Leisure_in_Doncaster/Sports_and_games/Sports_and_leisure_centres/Sports_and_Leisure_Centres.asp | 760 | 670 |
| 45 | Teaching Vacancies http://www.doncaster.gov.uk/Jobs_and_Careers/Teacher_Vacancies/Teaching_Vacancies.asp | 729 | 670 |
| 46 | School Holiday Pattern 2009/10 http://www.doncaster.gov.uk/learning_in_doncaster/pupil_and_parent/holidays/school_holiday_pattern_2009-10.asp | 752 | 669 |
| 47 | Advice and Benefits http://www.doncaster.gov.uk/Advice_and_Benefits/Advice_and_Benefits.asp | 877 | 649 |
| 48 | http://www.doncaster.gov.uk/webforms/ExtView.asp | 2,375 | 639 |
| 49 | Library catalogue and membership records http://www.doncaster.gov.uk/Leisure_in_Doncaster/Libraries/joining_and_membership/Library_catalogue_and_membership_records.asp | 724 | 628 |
| 50 | http://www.doncaster.gov.uk/webforms/extSubmitForm.asp | 802 | 614 |
| 51 | http://www.doncaster.gov.uk/webforms/Graphic.asp | 1,015 | 613 |
| 52 | Life Events http://www.doncaster.gov.uk/Living_in_Doncaster/Life_Events/Life_Events.asp | 682 | 575 |
| 53 | Mayor and Council http://www.doncaster.gov.uk/Living_in_Doncaster/The_Mayor_and_Council/The_Mayor_and_Council.asp | 724 | 575 |
| 54 | Doncaster Metropolitan Borough Council Address Search http://www.doncaster.gov.uk/My_Doncaster/Support/AddressSearch.asp | 812 | 571 |
| 55 | http://www.doncaster.gov.uk/db/APNI/results.asp | 688 | 543 |
| 56 | Doncaster Museum and Art Gallery http://www.doncaster.gov.uk/Leisure_in_Doncaster/Museums_and_history/Museums/Doncaster_Museum_and_Art_Gallery.asp | 1,182 | 541 |
| 57 | About the Doncaster Safeguarding Children Board http://www.doncaster.gov.uk/Health_and_Social_Care/caring_for_our_children/Safeguarding_and_Standards/Safeguarding_Children_Board/About_the_Doncaster_Safeguarding_Children_Board.asp | 644 | 535 |
| 58 | St James Pool and Health Club http://www.doncaster.gov.uk/leisure_in_doncaster/sports_and_games/sports_and_leisure_centres/st_james/st_james_pool_and_health_club.asp | 1,127 | 533 |
| 59 | Business http://www.doncaster.gov.uk/Working_in_Doncaster/Working_in_Doncaster.asp | 9,645 | 531 |
| 60 | Payments http://www.doncaster.gov.uk/Living_in_Doncaster/Payments/Payments.asp | 657 | 524 |
| 61 | Cusworth Hall & Park http://www.doncaster.gov.uk/Leisure_in_Doncaster/Museums_and_history/Cusworth_Hall_and_Park/Cusworth_Hall_and_Park_Main_Page.asp | 645 | 522 |
| 62 | Free festive entertainment in Doncaster town centre http://www.doncaster.gov.uk/living_in_doncaster/neighbourhoods/central/town_centre/free_festive_entertainment_highlights_in_doncaster_town_centre.asp | 682 | 522 |
| 63 | Search for schools in Doncaster http://www.doncaster.gov.uk/db/Schools/search.asp | 828 | 503 |
| 64 | Adwick Leisure Centre http://www.doncaster.gov.uk/leisure_in_doncaster/sports_and_games/sports_and_leisure_centres/adwick_leisure_centre/adwick_leisure_centre.asp | 614 | 501 |
| 65 | Housing Benefit & Council Tax Benefit http://www.doncaster.gov.uk/Living_in_Doncaster/Homes_and_Housing/Help_with_Housing_Costs/Housing_Benefit_and_Council_Tax_Benefits.asp | 637 | 500 |
| 66 | Homes & Housing http://www.doncaster.gov.uk/Living_in_Doncaster/Homes_and_Housing/Housing.asp | 634 | 499 |
| 67 | Green and Black Wheeled Bin Collections http://www.doncaster.gov.uk/living_in_doncaster/environment/recycling_rubbish_and_waste/wheeled_bin_collections/green_and_black_wheeled_bin_collections.asp | 681 | 496 |
| 68 | Recycling, Rubbish and Waste http://www.doncaster.gov.uk/Living_in_Doncaster/Environment/Recycling_Rubbish_and_Waste/Recycling_Rubbish_and_Waste.asp | 605 | 481 |
| 69 | Have Your Say http://www.doncaster.gov.uk/Have_your_say/Have_Your_Say.asp | 635 | 476 |
| 70 | Doncaster Council How much is your Council Tax? http://www.doncaster.gov.uk/db/ctax/ctaxsearch.asp | 1,183 | 463 |
| 71 | St James Pool and Health Club - Swimming Programme Term Time 2009/10 http://www.doncaster.gov.uk/Leisure_in_Doncaster/Sports_and_games/Sports_and_leisure_centres/St_James/St_James_Pool_and_Health_Club_-_Swimming_Programme_(Term_Time_2009-10).asp | 519 | 451 |
| 72 | Council Tax http://www.doncaster.gov.uk/living_in_doncaster/homes_and_housing/council_tax/council_tax.asp | 550 | 434 |

| | | | |
|-----|--|-------|-----|
| 73 | Libraries http://www.doncaster.gov.uk/Leisure_in_Doncaster/Libraries/Libraries.asp | 536 | 422 |
| 74 | Priorities http://www.doncaster.gov.uk/mayor/priorities.asp | 500 | 417 |
| 75 | Apply for it http://www.doncaster.gov.uk/apply_for_it/apply_for_it.asp | 484 | 403 |
| 76 | St James Pool and Health Club http://www.doncaster.gov.uk/Leisure_in_Doncaster/Sports_and_games/Sports_and_leisure_centres/St_James/St_James_Pool_and_Health_Club.asp | 940 | 401 |
| 77 | Central Library http://www.doncaster.gov.uk/Leisure_in_Doncaster/Libraries/central_library/Central_Library.asp | 936 | 396 |
| 78 | http://www.doncaster.gov.uk/hd/default.asp | 521 | 393 |
| 79 | Doncaster Metropolitan Borough Council Cusworth Hall http://www.doncaster.gov.uk/cusworthhall/index.htm | 413 | 393 |
| 80 | Thorne Sports Centre http://www.doncaster.gov.uk/Leisure_in_Doncaster/Sports_and_games/Sports_and_leisure_centres/Thorne_Sports_Centre/Thorne_Sports_Centre.asp | 938 | 391 |
| 81 | http://www.doncaster.gov.uk/IMAGES/ | 1,856 | 380 |
| 82 | Map Index http://www.doncaster.gov.uk/Get_a_Map/Map_Index.asp | 484 | 375 |
| 83 | Council Chamber http://www.doncaster.gov.uk/Living_in_Doncaster/The_Mayor_and_Council/doncasters_councillors/council_chamber/Council_Chamber.asp | 426 | 370 |
| 84 | Doncaster's Schools http://www.doncaster.gov.uk/Learning_in_Doncaster/pupil_and_parent/schools_in_doncaster/Doncasters_Schools.asp | 464 | 370 |
| 85 | Bring Sites Recycling Facilities http://www.doncaster.gov.uk/Living_in_Doncaster/Environment/Recycling_Rubbish_and_Waste/recycling_facilities/Recycling_Facilities.asp | 599 | 368 |
| 86 | Term Time Swimming Programme - 2009 http://www.doncaster.gov.uk/Leisure_in_Doncaster/Sports_and_games/Sports_and_leisure_centres/Armthorpe_Sports_Centre/Term_Time_Swimming_Programme.asp | 410 | 363 |
| 87 | Schools Database http://www.doncaster.gov.uk/Learning_in_Doncaster/pupil_and_parent/schools_in_doncaster/Schools_Database.asp | 404 | 363 |
| 88 | Planning Applications Decision Notices Issued 2009 Doncaster Council http://www.doncaster.gov.uk/Living_in_Doncaster/Neighbourhoods/Planning/development_control/planning_information/Planning_Applications_Decision_Notices_Issued_2009.asp | 451 | 363 |
| 89 | Local Policies, Procedures and Protocols http://www.doncaster.gov.uk/Health_and_Social_Care/caring_for_our_children/Safeguarding_and_Standards/Safeguarding_Children_Board/Local_Policies_-_Procedures_and_Protocols.asp | 441 | 359 |
| 90 | http://www.doncaster.gov.uk/hd/dstart.asp | 509 | 358 |
| 91 | http://www.doncaster.gov.uk/hd/dlogin.asp | 434 | 351 |
| 92 | Planning http://www.doncaster.gov.uk/living_in_doncaster/neighbourhoods/planning/planning_and_building_control.asp | 464 | 351 |
| 93 | Roadworks Report http://www.doncaster.gov.uk/Living_in_Doncaster/highways_streets_transport/road_works/Roadworks_Report.asp | 383 | 350 |
| 94 | Schools in Doncaster http://www.doncaster.gov.uk/db/Schools/hits.asp | 1,478 | 346 |
| 95 | Births, Deaths & Marriages http://www.doncaster.gov.uk/Living_in_Doncaster/Births_Deaths_and_Marriages/Births_-_Deaths_and_Marriages.asp | 414 | 343 |
| 96 | What's on at Cusworth http://www.doncaster.gov.uk/Leisure_in_Doncaster/Museums_and_history/Cusworth_Hall_and_Park/Whats_on_at_Cusworth.asp | 419 | 342 |
| 97 | Doncaster Archives http://www.doncaster.gov.uk/Leisure_in_Doncaster/Libraries/Archives_Local_Studies/Doncaster_Archives.asp | 393 | 332 |
| 98 | Report It http://www.doncaster.gov.uk/Report_It/Report_It.asp | 364 | 330 |
| 99 | Serious Case Reviews http://www.doncaster.gov.uk/Health_and_Social_Care/caring_for_our_children/Safeguarding_and_Standards/Safeguarding_Children_Board/Serious_Case_Reviews.asp | 386 | 327 |
| 100 | http://www.doncaster.gov.uk/hd/dLogin1.asp | 601 | 323 |
| 101 | Biography http://www.doncaster.gov.uk/mayor/biography.asp | 356 | 319 |
| 102 | Doncaster Safeguarding Children Board (DSCB) Training http://www.doncaster.gov.uk/Health_and_Social_Care/caring_for_our_children/Safeguarding_and_Standards/Safeguarding_Children_Board/Safeguarding_Children_Board_Training/Doncaster_Safeguarding_Children_Board_Training.asp | 338 | 317 |
| 103 | How you can pay less Council Tax http://www.doncaster.gov.uk/Living_in_Doncaster/Homes_and_Housing/Council_Tax/How_you_can_pay_less_Council_Tax.asp | 418 | 309 |

| | | | |
|-----|--|-----|-----|
| 104 | School Websites http://www.doncaster.gov.uk/Learning_in_Doncaster/pupil_and_parent/schools_in_doncaster/School_Websites.asp | 348 | 307 |
| 105 | Libraries http://www.doncaster.gov.uk/leisure_in_doncaster/libraries/libraries.asp | 479 | 305 |
| 106 | Museums & History http://www.doncaster.gov.uk/Leisure_in_Doncaster/Museums_and_history/Museums_and_History.asp | 391 | 304 |
| 107 | Adwick Leisure Centre http://www.doncaster.gov.uk/Leisure_in_Doncaster/Sports_and_games/Sports_and_leisure_centres/Adwick_Leisure_Centre/Adwick_Leisure_Centre.asp | 793 | 300 |
| 108 | Doncaster Safeguarding Children Board Team http://www.doncaster.gov.uk/Health_and_Social_Care/caring_for_our_children/Safeguarding_and_Standards/Safeguarding_Children_Board/DCSB_Team.asp | 311 | 296 |
| 109 | Sunday Car Boot Sales http://www.doncaster.gov.uk/Leisure_in_Doncaster/Shopping/Markets/Sunday_Car_Boot_Sales.asp | 373 | 296 |
| 110 | Learning in Doncaster http://www.doncaster.gov.uk/learning_in_doncaster/learning_in_doncaster.asp | 358 | 296 |
| 111 | http://www.doncaster.gov.uk/webforms/ExtSummary.asp | 385 | 291 |
| 112 | http://www.doncaster.gov.uk/webforms/ExtValve.asp | 380 | 287 |
| 113 | Free festive entertainment in Doncaster town centre http://www.doncaster.gov.uk/Living_in_Doncaster/Neighbourhoods/Central/Town_Centre/Free_festive_entertainment_highlights_in_Doncaster_town_centre.asp | 336 | 286 |
| 114 | Crookhill Park Golf Course http://www.doncaster.gov.uk/Leisure_in_Doncaster/Sports_and_games/Sports_and_leisure_centres/Crookhill_Park_Golf/Crookhill_Park_Golf_Course.asp | 816 | 284 |
| 115 | What's On http://www.doncaster.gov.uk/Leisure_in_Doncaster/Whats_On/Whats_On.asp | 323 | 284 |
| 116 | Fact Sheet http://www.doncaster.gov.uk/fact_sheets/fact_sheet.asp | 309 | 282 |
| 117 | http://www.doncaster.gov.uk/images/ | 811 | 282 |
| 118 | Registration of Births, Deaths, Marriages and Civil Partnerships http://www.doncaster.gov.uk/services/registration_of_births-deaths_and_marriages.asp | 773 | 281 |
| 119 | Frequently Asked Questions http://www.doncaster.gov.uk/Corporate_FAQs/Frequently_Asked_Questions.asp | 339 | 281 |
| 120 | Can't find it online? http://www.doncaster.gov.uk/Cannot_find_it_online/cant_find_it_online.asp | 290 | 279 |
| 121 | Local Development Framework http://www.doncaster.gov.uk/Living_in_Doncaster/Neighbourhoods/Planning/Local_Development_Framework/Local_Development_Framework.asp | 381 | 279 |
| 122 | Supplying the Council http://www.doncaster.gov.uk/Living_in_Doncaster/The_Mayor_and_Council/supplying_the_council/Supplying_the_Council.asp | 301 | 273 |
| 123 | Turkish Baths http://www.doncaster.gov.uk/Leisure_in_Doncaster/Sports_and_games/Sports_and_leisure_centres/St_James/Turkish_Baths.asp | 297 | 272 |
| 124 | Adult, Family and Community Learning http://www.doncaster.gov.uk/Learning_in_Doncaster/Out_of_School_and_Post_16/Adult_Family_and_Community_Learning/Adult_and_Community_Learning.asp | 780 | 271 |
| 125 | Doncaster Metropolitan Borough Council Markets http://www.doncaster.gov.uk/markets/index.htm | 291 | 270 |
| 126 | http://www.doncaster.gov.uk/Leisure_in_Doncaster/Sports_and_games/Sports_and_leisure_centres/Armthorpe_Sports_Centre/Christmas_and_New_Year_Opening_Times.asp | 300 | 270 |
| 127 | Registering A Marriage http://www.doncaster.gov.uk/Living_in_Doncaster/Births_Deaths_and_Marriages/Registering_A_Marriage.asp | 309 | 270 |
| 128 | Search for schools in Doncaster http://www.doncaster.gov.uk/db/Schools/ | 370 | 267 |
| 129 | Doncaster Child Death Overview Panel http://www.doncaster.gov.uk/Health_and_Social_Care/caring_for_our_children/Safeguarding_and_Standards/Safeguarding_Children_Board/Doncaster_Child_Death_Overview_Panel.asp | 275 | 266 |
| 130 | Homeless http://www.doncaster.gov.uk/living_in_doncaster/homes_and_housing/homeless_advice/homeless.asp | 319 | 265 |
| 131 | Kings Own Yorkshire Light Infantry Museum http://www.doncaster.gov.uk/leisure_in_doncaster/museums_and_history/museums/kings_own_yorkshire_light_infantry_museum.asp | 304 | 264 |
| 132 | Doncaster Market http://www.doncaster.gov.uk/Leisure_in_Doncaster/Shopping/Markets/Doncaster_Markets.asp | 748 | 263 |
| 133 | http://www.doncaster.gov.uk/about/ | 559 | 263 |
| 134 | Adwick Leisure Centre - Swimming Programme (Term Time) 2009 http://www.doncaster.gov.uk/Leisure_in_Doncaster/Sports_and_games/Sports_and_leisure_centres/Adwick_Leisure_Centre/Adwick_Leisure_Centre_-_Swimming_Programme_Term_Time).asp | 289 | 262 |

| | | | |
|-----|---|--------|-----|
| 135 | Housing Benefit & Council Tax Benefit http://www.doncaster.gov.uk/living_in_doncaster/homes_and_housing/help_with_housing_costs/housing_benefit_and_council_tax_benefits.asp | 381 | 261 |
| 136 | http://www.doncaster.gov.uk/db/Schools/fullrecord.asp | 1,718 | 259 |
| 137 | 24-hour online Library Services http://www.doncaster.gov.uk/Leisure_in_Doncaster/Libraries/joining_and_membership/24-hour_online_Library_Services.asp | 310 | 258 |
| 138 | Tender Opportunities http://www.doncaster.gov.uk/Living_in_Doncaster/The_Mayor_and_Council/supplying_the_council/Current_Tenders/Tender_Opportunities.asp | 281 | 257 |
| 139 | Parking Services http://www.doncaster.gov.uk/Living_in_Doncaster/highways_streets_transport/Parking_Services/Parking_Services.asp | 295 | 255 |
| 140 | Mayor's Suggestion Box http://www.doncaster.gov.uk/mayor/suggestion.asp | 271 | 253 |
| 141 | http://www.doncaster.gov.uk/db/accommodation/accomdetail.asp | 10,685 | 252 |
| 142 | St James Pool and Health Club - Prices 2009/10 http://www.doncaster.gov.uk/Leisure_in_Doncaster/Sports_and_games/Sports_and_leisure_centres/St_James/St_James_Pool_and_Health_Club_-_Prices_2009-10.asp | 292 | 252 |
| 143 | Domestic Waste Collection - FAQs http://www.doncaster.gov.uk/Living_in_Doncaster/Environment/Recycling_Rubbish_and_Waste/Wheeled_Bin_Collections/Waste_collection.asp | 304 | 250 |
| 144 | Local Housing Allowance http://www.doncaster.gov.uk/Living_in_Doncaster/Homes_and_Housing/Help_with_Housing_Costs/Local_Housing_Allowance/Local_Housing_Allowance.asp | 317 | 249 |
| 145 | Improvement Plan for Children and Young People's Service http://www.doncaster.gov.uk/Health_and_Social_Care/caring_for_our_children/CYPS_Improvement_Plan/Improvement_Plan_for_Children_and_Young_Peoples_Service.asp | 272 | 248 |
| 146 | Frequently Asked Questions - Wheeled Bin Collections http://www.doncaster.gov.uk/Living_in_Doncaster/Environment/Recycling_Rubbish_and_Waste/Wheeled_Bin_Collections/Frequently_Asked_Questions_-_Wheeled_Bin_Collections.asp | 316 | 248 |
| 147 | What you can put in your Green Box http://www.doncaster.gov.uk/Living_in_Doncaster/Environment/Recycling_Rubbish_and_Waste/Wheeled_Bin_Collections/What_you_can_put_in_your_Green_Box.asp | 272 | 247 |
| 148 | Doncaster Accommodation Guide http://www.doncaster.gov.uk/db/accommodation/accomsearch.asp | 526 | 246 |
| 149 | Website help pages http://www.doncaster.gov.uk/help/Website_help.asp | 277 | 245 |
| 150 | Weather Detail Doncaster Council http://www.doncaster.gov.uk/Today_in_Doncaster/Weather/WeatherDetail.asp | 262 | 245 |
| 151 | Doncaster Crown Court http://www.doncaster.gov.uk/Advice_and_Benefits/The_Law_Victims_and_Courts/Doncaster_Crown_Court.asp | 272 | 244 |
| 152 | Frequently Asked Questions - Fly-tipping and Fly-posting http://www.doncaster.gov.uk/living_in_doncaster/environment/recycling_rubbish_and_waste/flytipping_and_flyposting/frequently_asked_questions_-_fly-tipping_and_fly-posting.asp | 298 | 242 |
| 153 | Development Control Doncaster Council http://www.doncaster.gov.uk/Living_in_Doncaster/Neighbourhoods/Planning/development_control/Development_Control.asp | 309 | 242 |
| 154 | The Council Chamber http://www.doncaster.gov.uk/about/chamber/Default.asp | 358 | 240 |
| 155 | The Lakeside Village http://www.doncaster.gov.uk/Leisure_in_Doncaster/Shopping/Lakeside_Village/Lakeside_Village.asp | 263 | 238 |
| 156 | Contact the Mayor http://www.doncaster.gov.uk/mayor/contact.asp | 257 | 238 |
| 157 | Privacy Statement http://www.doncaster.gov.uk/privacy_statement/Privacy_Statement.asp | 249 | 235 |
| 158 | Renting a House http://www.doncaster.gov.uk/Living_in_Doncaster/Homes_and_Housing/Renting_a_House/Renting_a_house.asp | 246 | 235 |
| 159 | Find your local library http://www.doncaster.gov.uk/Leisure_in_Doncaster/Libraries/community_libraries/Find_your_local_library.asp | 265 | 231 |
| 160 | a new doncaster http://www.doncaster.gov.uk/doncasterbrand/index.htm | 240 | 231 |
| 161 | Rossington Sports Centre http://www.doncaster.gov.uk/Leisure_in_Doncaster/Sports_and_games/Sports_and_leisure_centres/Rossington_Sports_Centre/Rossington_Sports_Centre.asp | 720 | 230 |
| 162 | http://www.doncaster.gov.uk/hd/saffmenu.asp | 249 | 230 |
| 163 | http://www.doncaster.gov.uk/hd/ViewRentAccount.asp | 242 | 226 |
| 164 | What is the Doncaster Safeguarding Children Board? http://www.doncaster.gov.uk/Health_and_Social_Care/caring_for_our_children/Safeguarding_and_Standards/Safeguarding_Children_Board/What_is_the_Doncaster_Safeguarding_Children_Board.asp | 239 | 226 |
| 165 | http://www.doncaster.gov.uk/hd/dLogin2.asp | 240 | 226 |

| | | | |
|-----|--|-----|-----|
| 166 | Doncaster Community Web Site - Maps http://www.doncaster.gov.uk/db/maps/maps.htm | 236 | 225 |
| 167 | http://www.doncaster.gov.uk/hd/dlogin3.asp | 317 | 224 |
| 168 | Disclaimer http://www.doncaster.gov.uk/disclaimer/Disclaimer.asp | 237 | 223 |
| 169 | Armthorpe Sports Centre - Fitness Classes & Activities http://www.doncaster.gov.uk/Leisure_in_Doncaster/Sports_and_games/Sports_and_leisure_centres/Armthorpe_Sports_Centre/Armthorpe_Sports_Centre_Fitness_Classes.asp | 241 | 219 |
| 170 | Doncaster Magistrates Court http://www.doncaster.gov.uk/Advice_and_Benefits/The_Law_Victims_and_Courts/Doncaster_Magistrates_Court.asp | 252 | 219 |
| 171 | The Planning System http://www.doncaster.gov.uk/Living_in_Doncaster/Neighbourhoods/Planning/planning_system/The_Planning_System.asp | 269 | 218 |
| 172 | Child Protection http://www.doncaster.gov.uk/Health_and_Social_Care/caring_for_our_children/Child_Protection/Child_Protection.asp | 252 | 218 |
| 173 | Doncaster Safeguarding Children Board (DSCB) e-Learning http://www.doncaster.gov.uk/Health_and_Social_Care/caring_for_our_children/Safeguarding_and_Standards/Safeguarding_Children_Board/Safeguarding_Children_Board_Training/DSCB_e-Learning.asp | 229 | 216 |
| 174 | Applying for a Council House http://www.doncaster.gov.uk/Living_in_Doncaster/Homes_and_Housing/Renting_a_House/Applying_for_a_Council_House.asp | 261 | 215 |
| 175 | Useful Job Links http://www.doncaster.gov.uk/Jobs_and_Careers/Useful_Links/Useful_Job_Links.asp | 244 | 213 |
| 176 | Web Statistics http://www.doncaster.gov.uk/webstats/web_stats.asp | 222 | 213 |
| 177 | Doncaster Shopping http://www.doncaster.gov.uk/Leisure_in_Doncaster/Shopping/Shopping/Doncaster_Shopping.asp | 236 | 212 |
| 178 | http://www.doncaster.gov.uk/Working_in_Doncaster/South_Yorkshire_Home_Services_Directory/South_Yorkshire_Trading_Standards_Home_Services_Directory.asp | 234 | 212 |
| 179 | Hatfield Water Park Outdoor Activity Centre http://www.doncaster.gov.uk/Leisure_in_Doncaster/Sports_and_games/Sports_and_leisure_centres/Hatfield_Water_Park/Hatfield_Water_Park.asp | 693 | 212 |
| 180 | School Holiday Pattern 2011/12 (Provisional) http://www.doncaster.gov.uk/Learning_in_Doncaster/pupil_and_parent/Holidays/School_Holiday_Pattern_2011-12_(Provisional).asp | 240 | 210 |
| 181 | Rose Hill Crematorium http://www.doncaster.gov.uk/living_in_doncaster/cemeteries_crematorium/rosehill_crematorium.asp | 241 | 210 |
| 182 | Recycle Your Waste http://www.doncaster.gov.uk/Living_in_Doncaster/Environment/Recycling_Rubbish_and_Waste/Recycling/Recycle_Your_Waste.asp | 243 | 209 |
| 183 | Apprenticeships http://www.doncaster.gov.uk/Working_in_Doncaster/Bentley_Training_Centre/Apprenticeships.asp | 230 | 208 |
| 184 | Choice-based lettings http://www.doncaster.gov.uk/Living_in_Doncaster/Homes_and_Housing/our_housing_plans/Choice-based_lettings.asp | 241 | 208 |
| 185 | http://www.doncaster.gov.uk/Leisure_in_Doncaster/Sports_and_games/Sports_and_leisure_centres/St_James/Christmas_Opening_at_St_James_Pool_and_Health_Club.asp | 231 | 208 |
| 186 | Council Tax Discount and Exemption Forms http://www.doncaster.gov.uk/Living_in_Doncaster/Homes_and_Housing/Council_Tax/Council_Tax_Discount_and_Exemption_Forms.asp | 234 | 208 |
| 187 | languages http://www.doncaster.gov.uk/languages/languages.asp | 219 | 208 |
| 188 | What you can put in your Green Bin http://www.doncaster.gov.uk/Living_in_Doncaster/Environment/Recycling_Rubbish_and_Waste/Wheeled_Bin_Collections/What_you_can_put_in_your_Green_Bin.asp | 217 | 205 |
| 189 | Tourist Information Centre http://www.doncaster.gov.uk/Leisure_in_Doncaster/Visit_Doncaster/Information_centres/Tourist_information.asp | 697 | 205 |
| 190 | Rossington Sports Centre Swimming Programme Term Time http://www.doncaster.gov.uk/Leisure_in_Doncaster/Sports_and_games/Sports_and_leisure_centres/Rossington_Sports_Centre/Swimming_Programme_(Term_Time_2007-08).asp | 223 | 204 |
| 191 | Planning Application Forms http://www.doncaster.gov.uk/Living_in_Doncaster/Neighbourhoods/Planning/development_control/online_documents/Downloadable_Planning_Application_Forms.asp | 253 | 198 |
| 192 | Fresh Air Homepage http://www.doncaster.gov.uk/airq/ | 231 | 197 |
| 193 | How much benefit will we pay you http://www.doncaster.gov.uk/Living_in_Doncaster/Homes_and_Housing/Help_with_Housing_Costs/benefit_rates.asp | 225 | 195 |
| 194 | Daily Air Pollution Levels http://www.doncaster.gov.uk/Living_in_Doncaster/Environment/Pollution/Air/Daily_Air_Pollution_Levels.asp | 205 | 195 |

| | | | |
|-----|--|-----|-----|
| 195 | Doncaster Schools Catering http://www.doncaster.gov.uk/Learning_in_Doncaster/pupil_and_parent/School_Meals/School_Catering.asp | 215 | 195 |
| 196 | Refuse Collection - Domestic http://www.doncaster.gov.uk/Services/Refuse_Collection_-_Domestic_.asp | 221 | 193 |
| 197 | Pupil and Parent Information http://www.doncaster.gov.uk/Learning_in_Doncaster/pupil_and_parent/Pupil_and_Parent.asp | 224 | 193 |
| 198 | Carcroft Motorcycle Park http://www.doncaster.gov.uk/Leisure_in_Doncaster/Sports_and_games/pastimes/Carcroft_Motorcycle_Park.asp | 243 | 193 |
| 199 | The Council http://www.doncaster.gov.uk/Living_in_Doncaster/The_Mayor_and_Council/Council_Dir/the_council.asp | 211 | 192 |
| 200 | Adwick Leisure Centre - Prices 2009/10 http://www.doncaster.gov.uk/Leisure_in_Doncaster/Sports_and_games/Sports_and_leisure_centres/Adwick_Leisure_Centre/Prices.asp | 205 | 192 |
| 201 | Environmental Health http://www.doncaster.gov.uk/Living_in_Doncaster/Environment/envirn_health/envirn_health.asp | 258 | 191 |
| 202 | St Leger Homes of Doncaster http://www.doncaster.gov.uk/Living_in_Doncaster/Homes_and_Housing/St_Leger_Homes/St_Leger_Homes_of_Doncaster.asp | 208 | 191 |
| 203 | Armthorpe Sports Centre - Prices 2009/10 http://www.doncaster.gov.uk/Leisure_in_Doncaster/Sports_and_games/Sports_and_leisure_centres/Armthorpe_Sports_Centre/Armthorpe_Sports_Centre_-_Prices.asp | 203 | 190 |
| 204 | Thorne Sports Centre - Swimming Programme (Term Time) 2009 - 10 http://www.doncaster.gov.uk/Leisure_in_Doncaster/Sports_and_games/Sports_and_leisure_centres/Thorne_Sports_Centre/Thorne_Sports_Centre_-_Swimming_Programme_(Term_Time).asp | 221 | 188 |
| 205 | Rose Hill Crematorium Directions http://www.doncaster.gov.uk/Living_in_Doncaster/Cemeteries_Crematorium/Rose_Hill_Crematorium_Directions.asp | 212 | 188 |
| 206 | Romans on the Don http://www.doncaster.gov.uk/Leisure_in_Doncaster/Museums_and_history/Romans_on_the_Don/Romans_on_the_Don.asp | 236 | 187 |
| 207 | Getting in touch with Council Tax - Revenues http://www.doncaster.gov.uk/Living_in_Doncaster/Homes_and_Housing/Council_Tax/Getting_in_touch_with_Council_Tax.asp | 193 | 187 |
| 208 | Building Control Doncaster Council http://www.doncaster.gov.uk/Living_in_Doncaster/Neighbourhoods/Planning/building_control/Building_Control-2.asp | 234 | 186 |
| 209 | Edlington Sports Centre http://www.doncaster.gov.uk/Leisure_in_Doncaster/Sports_and_games/Sports_and_leisure_centres/Edlington_Sports_Centre/Edlington_Sports_Centre.asp | 667 | 186 |
| 210 | Checking If Planning Permission Is Required http://www.doncaster.gov.uk/living_in_doncaster/neighbourhoods/planning/planning_system/checking_if_planning_permission_is_required.asp | 221 | 185 |
| 211 | Nursery Admissions http://www.doncaster.gov.uk/Learning_in_Doncaster/pupil_and_parent/Admissions/Nursery_Admissions.asp | 220 | 185 |
| 212 | The Mayor http://www.doncaster.gov.uk/Living_in_Doncaster/The_Mayor_and_Council/Elected_Mayor/The_Mayor.asp | 199 | 185 |
| 213 | Frequently Asked Questions - Black Wheeled Bins http://www.doncaster.gov.uk/Living_in_Doncaster/Environment/Recycling_Rubbish_and_Waste/Wheeled_Bin_Collections/Frequently_Asked_Questions_-_Black_Wheeled_Bins.asp | 213 | 184 |
| 214 | Teacher and School Information http://www.doncaster.gov.uk/Learning_in_Doncaster/Teacher_and_School/Teacher_and_School.asp | 201 | 184 |
| 215 | People and Performance Improvement Doncaster Council http://www.doncaster.gov.uk/Living_in_Doncaster/The_Mayor_and_Council/Council_Dir/People_and_Performance_Improvement/People_and_Performance_Improvement.asp | 248 | 183 |
| 216 | http://www.doncaster.gov.uk/Leisure_in_Doncaster/Sports_and_games/Sports_and_leisure_centres/Adwick_Leisure_Centre/Christmas_Opening_2009_at_Adwick_Leisure_Centre.asp | 200 | 183 |
| 217 | Cemetery and Crematorium Price List http://www.doncaster.gov.uk/Living_in_Doncaster/Cemeteries_Crematorium/Price_List.asp | 208 | 183 |
| 218 | Local Studies Library http://www.doncaster.gov.uk/Leisure_in_Doncaster/Libraries/Archives_Local_Studies/Local_Studies_Library.asp | 200 | 182 |
| 219 | School Governors in Doncaster http://www.doncaster.gov.uk/Learning_in_Doncaster/pupil_and_parent/School_Governors/School_Governors.asp | 191 | 182 |
| 220 | Graduate Teacher Programme (GTP) http://www.doncaster.gov.uk/Learning_in_Doncaster/Teacher_and_School/Graduate_Teacher_Programme/Graduate_Teacher_Programme.asp | 187 | 181 |
| 221 | South/East http://www.doncaster.gov.uk/Living_in_Doncaster/Neighbourhoods/SouthEast/SouthEast.asp | 216 | 180 |
| 222 | How is my property valued? http://www.doncaster.gov.uk/Living_in_Doncaster/Homes_and_Housing/Council_Tax/How_is_my_property_valued.asp | 187 | 180 |
| 223 | Housing Benefit and Council Tax Benefit Forms http://www.doncaster.gov.uk/Living_in_Doncaster/Homes_and_Housing/Help_with_Housing_Costs/Housing_Benefit_and_Council_Tax_Benefit_Forms.asp | 233 | 179 |

| | | | |
|-----|---|-----|-----|
| 224 | Frequently Asked Questions - Asbestos http://www.doncaster.gov.uk/Living_in_Doncaster/Environment/envirn_health/public_health_service/Frequently_Asked_Questions_-_Asbestos.asp | 198 | 178 |
| 225 | Celebrating Successes http://www.doncaster.gov.uk/Living_in_Doncaster/The_Mayor_and_Council/Celebrating_Success/Celebrating_Successes.asp | 192 | 178 |
| 226 | Change of Address / Circumstances Form http://www.doncaster.gov.uk/Living_in_Doncaster/Homes_and_Housing/Council_Tax/Change_of_Address_Form.asp | 185 | 178 |
| 227 | Renewal of loans http://www.doncaster.gov.uk/Leisure_in_Doncaster/Libraries/joining_and_membership/Renewal_of_loans.asp | 204 | 176 |
| 228 | Doncaster Accommodation Guide http://www.doncaster.gov.uk/db/accommodation/accomlist.asp | 338 | 175 |
| 229 | Neighbourhoods http://www.doncaster.gov.uk/Living_in_Doncaster/Neighbourhoods/Neighbourhoods.asp | 215 | 175 |
| 230 | Askern and Campsall Sports Centre http://www.doncaster.gov.uk/Leisure_in_Doncaster/Sports_and_games/Sports_and_leisure_centres/Askern_Campsall_Sports_Centre/Askern_and_Campsall_Sports_Centre.asp | 652 | 174 |
| 231 | Getting Copies of Certificates http://www.doncaster.gov.uk/Living_in_Doncaster/Births_Deaths_and_Marriages/Copies_of_Certificates.asp | 210 | 174 |
| 232 | School Admissions http://www.doncaster.gov.uk/Learning_in_Doncaster/pupil_and_parent/Admissions/School_Admissions.asp | 198 | 173 |
| 233 | Visit Doncaster http://www.doncaster.gov.uk/tourism/kioskroot/kioskindex.asp | 474 | 172 |
| 234 | Archives & Local Studies http://www.doncaster.gov.uk/Leisure_in_Doncaster/Libraries/Archives_Local_Studies/Archives_and_Local_Studies.asp | 187 | 172 |
| 235 | What's on in the Central Area http://www.doncaster.gov.uk/Living_in_Doncaster/Neighbourhoods/Central/Whats_On/Whats_on_in_the_Central_Area.asp | 199 | 171 |
| 236 | Planning Applications http://www.doncaster.gov.uk/Services/Planning_Applications.asp | 203 | 170 |
| 237 | Recycling/Waste Disposal http://www.doncaster.gov.uk/Services/Recycling-Waste_Disposal_.asp | 194 | 170 |
| 238 | Centres of Excellence/Satellite Centres and Connexions Access Points http://www.doncaster.gov.uk/Learning_in_Doncaster/Out_of_School_and_Post_16/youth_service/Centres_of_Excellence.asp | 658 | 170 |
| 239 | Christmas Tree Recycling http://www.doncaster.gov.uk/Living_in_Doncaster/Environment/Recycling_Rubbish_and_Waste/Recycling/Recycle_Christmas/Christmas_Tree_Recycling.asp | 190 | 169 |
| 240 | What's on in the South / East Area http://www.doncaster.gov.uk/Living_in_Doncaster/Neighbourhoods/SouthEast/East_Whats_On/Whats_on_in_the_East_Area.asp | 213 | 169 |
| 241 | Domestic Waste Bins - New and Replacements http://www.doncaster.gov.uk/Living_in_Doncaster/Environment/Recycling_Rubbish_and_Waste/Wheeled_Bin_Collections/Domestic_Waste_Bins.asp | 183 | 169 |
| 242 | Winter Maintenance http://www.doncaster.gov.uk/Living_in_Doncaster/highways_streets_transport/winter_maintenance/Winter_Maintenance.asp | 185 | 168 |
| 243 | Older People's services http://www.doncaster.gov.uk/Health_and_Social_Care/caring_for_our_adults/Older_people/Older_People.asp | 185 | 168 |
| 244 | Cusworth Hall http://www.doncaster.gov.uk/Leisure_in_Doncaster/Museums_and_history/Cusworth_Hall_and_Park/Cusworth_Hall/Cusworth_Hall.asp | 195 | 167 |
| 245 | http://www.doncaster.gov.uk/Advice_and_Benefits/Fire_Safety/Fire_Safety_-_Workplace_Regulations.asp | 192 | 167 |
| 246 | Doncaster Metropolitan Borough MPs and Yorkshire and Humber MEPs http://www.doncaster.gov.uk/Living_in_Doncaster/The_Mayor_and_Council/doncasters_councillors/Doncaster_Metropolitan_Borough_MPs_and_Yorkshire_and_Humber_MEPs.asp | 198 | 166 |
| 247 | Visitor Information http://www.doncaster.gov.uk/Leisure_in_Doncaster/Museums_and_history/Cusworth_Hall_and_Park/Information.asp | 185 | 166 |
| 248 | Doncaster Businesses http://www.doncaster.gov.uk/Working_in_Doncaster/Business_Links/Doncaster_Business_Links.asp | 185 | 165 |
| 249 | Early Years and Childcare Service http://www.doncaster.gov.uk/Health_and_Social_Care/caring_for_our_children/Early_Years_and_Childcare_Service/Early_Years_Development_and_Childcare_Service.asp | 190 | 163 |
| 250 | Town & Parish Councils - A http://www.doncaster.gov.uk/Living_in_Doncaster/The_Mayor_and_Council/doncasters_councillors/town_parish_A.asp | 632 | 162 |
| 251 | Staff Vacancies http://www.doncaster.gov.uk/Learning_in_Doncaster/pupil_and_parent/School_Meals/Staff_Vacancies.asp | 171 | 162 |
| 252 | Frequently Asked Questions - Markets http://www.doncaster.gov.uk/Leisure_in_Doncaster/Shopping/Markets/Frequently_Asked_Questions_-_Markets.asp | 170 | 162 |

| | | | |
|-----|---|-----|-----|
| 253 | Safeguarding Adults http://www.doncaster.gov.uk/Health_and_Social_Care/caring_for_our_adults/Safeguarding_Adults/Safeguarding_Adults.asp | 184 | 162 |
| 254 | Cemeteries http://www.doncaster.gov.uk/Living_in_Doncaster/Cemeteries_Crematorium/Cemeteries.asp | 179 | 161 |
| 255 | Doncaster County Court http://www.doncaster.gov.uk/advice_and_benefits/the_law_victims_and_courts/doncaster_county_court.asp | 174 | 161 |
| 256 | How do I claim Housing Benefit and Council Tax Benefit http://www.doncaster.gov.uk/Living_in_Doncaster/Homes_and_Housing/Help_with_Housing_Costs/Housing_Council_Tax_Benefits_FAQ/claiming_benefit.asp | 181 | 160 |
| 257 | Registering A Birth http://www.doncaster.gov.uk/Living_in_Doncaster/Births_Deaths_and_Marriages/Registering_A_Birth.asp | 177 | 160 |
| 258 | Housing Grants http://www.doncaster.gov.uk/Living_in_Doncaster/Homes_and_Housing/improvements_grants/Housing_Grants.asp | 225 | 160 |
| 259 | Shopping http://www.doncaster.gov.uk/Leisure_in_Doncaster/Shopping/Shopping.asp | 178 | 160 |
| 260 | The Waste Problem http://www.doncaster.gov.uk/Living_in_Doncaster/Environment/Recycling_Rubbish_and_Waste/Recycling/Recycling.asp | 177 | 159 |
| 261 | Leisure Card Scheme http://www.doncaster.gov.uk/Leisure_in_Doncaster/active_doncaster/Discount_Schemes/Leisure_Card_Scheme.asp | 175 | 159 |
| 262 | Civic and Cultural Quarter http://www.doncaster.gov.uk/Working_in_Doncaster/civic_and_cultural_quarter/Civic_and_Cultural_Quarter.asp | 191 | 159 |
| 263 | Common Assessment Process http://www.doncaster.gov.uk/Health_and_Social_Care/caring_for_our_children/Common_Assessment_Framework/Common_Assessment_Process.asp | 184 | 159 |
| 264 | Frequently Asked Questions - Customer Service Centres http://www.doncaster.gov.uk/Leisure_in_Doncaster/Libraries/joining_and_membership/Frequently_Asked_Questions_-_Customer_Service_Centres.asp | 205 | 158 |
| 265 | Families First Teams http://www.doncaster.gov.uk/Health_and_Social_Care/caring_for_our_children/Families_First/Families_First_Teams.asp | 198 | 158 |
| 266 | Children Centres http://www.doncaster.gov.uk/Route2000/FamilyCentres/ChildrenCentres.asp | 246 | 158 |
| 267 | Doncaster Racecourse http://www.doncaster.gov.uk/Leisure_in_Doncaster/Visit_Doncaster/Racecourse/doncaster_racecourse.asp | 172 | 158 |
| 268 | Housing Associations http://www.doncaster.gov.uk/living_in_doncaster/homes_and_housing/renting_a_house/housing_associations.asp | 195 | 157 |
| 269 | Introduction to Woods & Country Parks http://www.doncaster.gov.uk/Leisure_in_Doncaster/Outdoor_Life/Woods_and_Country_Parks/Woods_and_Country_Parks.asp | 637 | 157 |
| 270 | Adwick Leisure Centre - Fitness Suite http://www.doncaster.gov.uk/Leisure_in_Doncaster/Sports_and_games/Sports_and_leisure_centres/Adwick_Leisure_Centre/Adwick_Leisure_Centre_-_Fitness_Suite.asp | 175 | 156 |
| 271 | North/West http://www.doncaster.gov.uk/Living_in_Doncaster/Neighbourhoods/NorthWest/NorthWest.asp | 187 | 156 |
| 272 | Sports Clubs http://www.doncaster.gov.uk/Leisure_in_Doncaster/Sports_and_games/sports_clubs/Sports_Clubs.asp | 169 | 156 |
| 273 | Sports & Pastimes http://www.doncaster.gov.uk/Leisure_in_Doncaster/Sports_and_games/Sports_and_Pastimes.asp | 167 | 156 |
| 274 | Council Meeting Minutes, Agendas and Reports http://www.doncaster.gov.uk/Living_in_Doncaster/The_Mayor_and_Council/doncasters_councillors/council_chamber/Minutes_Agendas_and_Reports.asp | 169 | 155 |
| 275 | How can we help you to live independently? http://www.doncaster.gov.uk/Health_and_Social_Care/caring_for_our_adults/independent_living/How_can_we_help_you_to_live_independently.asp | 191 | 155 |
| 276 | South Yorkshire Motor Trade Business Partnership http://www.doncaster.gov.uk/Working_in_Doncaster/South_Yorkshire_Motor_Trade_Business_Partnership/South_Yorkshire_Motor_Trade_Business_Partnership.asp | 183 | 154 |
| 277 | Street Lighting http://www.doncaster.gov.uk/Living_in_Doncaster/highways_streets_transport/street_lighting/Street_Lighting.asp | 168 | 154 |
| 278 | Library catalogue and membership records http://www.doncaster.gov.uk/leisure_in_doncaster/libraries/joining_and_membership/library_catalogue_and_membership_records.asp | 191 | 154 |
| 279 | Joining the Library http://www.doncaster.gov.uk/Leisure_in_Doncaster/Libraries/joining_and_membership/Joining_the_Library.asp | 161 | 154 |
| 280 | http://www.doncaster.gov.uk/HD/default.asp | 184 | 154 |
| 281 | Armthorpe Sports Centre Fitness Studio http://www.doncaster.gov.uk/Leisure_in_Doncaster/Sports_and_games/Sports_and_leisure_centres/Armthorpe_Sports_Centre/Armthorpe_Sports_Centre_Fitness_Studio.asp | 162 | 153 |

| | | | |
|-----|---|-----|-----|
| 282 | Youth Service Information http://www.doncaster.gov.uk/Learning_in_Doncaster/Out_of_School_and_Post_16/youth_service/Youth_Service_Information.asp | 161 | 153 |
| 283 | Home Care and Support Services http://www.doncaster.gov.uk/Health_and_Social_Care/caring_for_our_adults/Home_Care/Home_Care_and_Support_Services.asp | 186 | 152 |
| 284 | Customer Service Centres http://www.doncaster.gov.uk/Have_your_say/customer_services/Customer_Service_Centres.asp | 635 | 152 |
| 285 | Askern and Campsall Sports Centre - Swimming Programme (Term Time) http://www.doncaster.gov.uk/Leisure_in_Doncaster/Sports_and_games/Sports_and_leisure_centres/Askern_Campsall_Sports_Centre/Askern_and_Campsall_Sports_Centre_Swimming_Programme_(Term_Time).asp | 168 | 152 |
| 286 | Public Transport Information http://www.doncaster.gov.uk/living_in_doncaster/highways_streets_transport/transportation/public_transport_information/public_transport_information.asp | 202 | 152 |
| 287 | Member Support http://www.doncaster.gov.uk/Living_in_Doncaster/The_Mayor_and_Council/doncasters_councillors/Member_Support.asp | 171 | 151 |
| 288 | Parliamentary, Mayoral and Local Election Results http://www.doncaster.gov.uk/Living_in_Doncaster/The_Mayor_and_Council/voting_elections_democracy/Elections/Parliamentary_Mayoral_and_Local_Elections.asp | 173 | 151 |
| 289 | Frequently Asked Questions - Council Tax - Payment & Collection Issues http://www.doncaster.gov.uk/Living_in_Doncaster/Homes_and_Housing/Council_Tax/f-a-q/Frequently_Asked_Questions_-_Council_Tax_-_Payment_and_Collection_Issue.asp | 178 | 151 |
| 290 | Doncaster Carers http://www.doncaster.gov.uk/Health_and_Social_Care/caring_for_our_adults/Doncaster_Carers/Doncaster_Carers.asp | 174 | 151 |
| 291 | Current and forthcoming Exhibitions at Doncaster Museum and Art Gallery http://www.doncaster.gov.uk/Leisure_in_Doncaster/Museums_and_history/Museums/Current_Exhibitions.asp | 177 | 151 |
| 292 | Frequently Asked Questions http://www.doncaster.gov.uk/Living_in_Doncaster/Homes_and_Housing/Council_Tax/f-a-q/Frequently_Asked_Questions.asp | 158 | 149 |
| 293 | Primary Admissions http://www.doncaster.gov.uk/Learning_in_Doncaster/pupil_and_parent/Admissions/Primary_Admissions.asp | 191 | 148 |
| 294 | Lakeside Sports Complex http://www.doncaster.gov.uk/Leisure_in_Doncaster/Sports_and_games/lakeside_sports_complex/Community_Sports_Complex.asp | 160 | 148 |
| 295 | Trading Standards http://www.doncaster.gov.uk/Working_in_Doncaster/Trading_Standards/Trading_Standards.asp | 200 | 148 |
| 296 | Champion Sports Pass http://www.doncaster.gov.uk/Leisure_in_Doncaster/active_doncaster/Discount_Schemes/Champion_Sports_Pass.asp | 161 | 148 |
| 297 | Useful links for moving house http://www.doncaster.gov.uk/Living_in_Doncaster/Homes_and_Housing/Useful_information_for_moving_house/Useful_links_for_moving_house.asp | 167 | 148 |
| 298 | Doncaster Chamber of Commerce http://www.doncaster.gov.uk/Working_in_Doncaster/Business_Links/Doncaster_Chamber_of_Commerce.asp | 157 | 148 |
| 299 | Frequently Asked Questions - Parking Fines http://www.doncaster.gov.uk/Living_in_Doncaster/highways_streets_transport/Parking_Services/Frequently_Asked_Questions_-_Parking_Fines.asp | 165 | 148 |
| 300 | Licensing Service http://www.doncaster.gov.uk/Working_in_Doncaster/Licensing/Licensing_Service.asp | 169 | 148 |
| 301 | Town & Parish Councils - B http://www.doncaster.gov.uk/Living_in_Doncaster/The_Mayor_and_Council/doncasters_councillors/town_parish_B.asp | 626 | 147 |
| 302 | Crematorium and Cemetery Opening Hours http://www.doncaster.gov.uk/Living_in_Doncaster/Cemeteries_Crematorium/Crematorium_and_Cemetery_Information.asp | 161 | 147 |
| 303 | Frequently Asked Questions - Council Tax - General Information http://www.doncaster.gov.uk/Living_in_Doncaster/Homes_and_Housing/Council_Tax/f-a-q/Frequently_Asked_Questions_-_Council_Tax_-_General_Information.asp | 177 | 146 |
| 304 | Household Waste Recycling Centres http://www.doncaster.gov.uk/living_in_doncaster/environment/recycling_rubbish_and_waste/recycling_facilities/household_waste_recycling_centres.asp | 365 | 146 |
| 305 | The Green Corridor Programme http://www.doncaster.gov.uk/Living_in_Doncaster/Homes_and_Housing/green_corridors/The_Green_Corridor_Programme.asp | 166 | 146 |
| 306 | Caring for our adults http://www.doncaster.gov.uk/Health_and_Social_Care/caring_for_our_adults/Caring_for_our_adults.asp | 179 | 146 |
| 307 | Frequently Asked Questions - Green wheeled bins http://www.doncaster.gov.uk/Living_in_Doncaster/Environment/Recycling_Rubbish_and_Waste/Wheeled_Bin_Collections/Frequently_Asked_Questions_-_Green_wheeled_bins.asp | 159 | 146 |
| 308 | Caring for our children http://www.doncaster.gov.uk/Health_and_Social_Care/caring_for_our_children/Caring_for_our_children.asp | 174 | 145 |

| | | | |
|-----|---|-----|-----|
| 309 | What you can put in your Black Bin http://www.doncaster.gov.uk/Living_in_Doncaster/Environment/Recycling_Rubbish_and_Waste/Wheeled_Bin_Collections/What_you_can_put_in_your_Black_Bin.asp | 153 | 145 |
| 310 | Roads and Pavements http://www.doncaster.gov.uk/Living_in_Doncaster/highways_streets_transport/roads_and_pavements/Roads_and_Pavements.asp | 155 | 145 |
| 311 | Public Transport Information http://www.doncaster.gov.uk/Living_in_Doncaster/highways_streets_transport/transportation/public_transport_information/Public_Transport_Information.asp | 165 | 145 |
| 312 | Family & Local History Alphabet http://www.doncaster.gov.uk/Leisure_in_Doncaster/Libraries/Archives_Local_Studies/family_local_history/Local_and_Family_History_Links.asp | 165 | 145 |
| 313 | Doncaster's Local Wildlife and Geological Sites http://www.doncaster.gov.uk/Living_in_Doncaster/Neighbourhoods/Planning/environmental_planning/Local_Sites/Local_Sites.asp | 173 | 144 |
| 314 | Housing Market Renewal Pathfinder http://www.doncaster.gov.uk/Living_in_Doncaster/Homes_and_Housing/HMR_pathfinder/Housing_Market_Renewal_Pathfinder.asp | 159 | 144 |
| 315 | Winter Maintenance - Snow Clearance http://www.doncaster.gov.uk/Living_in_Doncaster/highways_streets_transport/winter_maintenance/Winter_Maintenance_-_Snow_Clearance.asp | 168 | 144 |
| 316 | Information for Tenants http://www.doncaster.gov.uk/Living_in_Doncaster/Homes_and_Housing/tenant_information/tenants_information.asp | 147 | 144 |
| 317 | Central http://www.doncaster.gov.uk/Living_in_Doncaster/Neighbourhoods/Central/Central.asp | 168 | 144 |
| 318 | Activo Membership Packages http://www.doncaster.gov.uk/Leisure_in_Doncaster/active_doncaster/Discount_Schemes/Activo_Membership_Packages.asp | 153 | 144 |
| 319 | Doncaster Mansion House http://www.doncaster.gov.uk/leisure_in_doncaster/museums_and_history/historic_buildings/mansion_house/doncaster_mansion_house.asp | 631 | 143 |
| 320 | Doncaster Waste Strategy http://www.doncaster.gov.uk/Living_in_Doncaster/Environment/Recycling_Rubbish_and_Waste/Waste_Strategy/Doncaster_Waste_Strategy.asp | 152 | 143 |
| 321 | Bentley Training Centre http://www.doncaster.gov.uk/Working_in_Doncaster/Bentley_Training_Centre/Bentley_Training_Centre.asp | 155 | 143 |
| 322 | Introduction to Walking & Cycling http://www.doncaster.gov.uk/Leisure_in_Doncaster/Outdoor_Life/Walking_and_cycling/Walking_and_Cycling.asp | 158 | 143 |
| 323 | Town & Parish Councils - M-R http://www.doncaster.gov.uk/Living_in_Doncaster/The_Mayor_and_Council/doncasters_councillors/town_parish_M-R.asp | 618 | 143 |
| 324 | School Information Data Services http://www.doncaster.gov.uk/Learning_in_Doncaster/Teacher_and_School/SIDS/School_Information_Data_Services.asp | 152 | 142 |
| 325 | Parks http://www.doncaster.gov.uk/Leisure_in_Doncaster/Outdoor_Life/Parks_and_Open_Spaces/Parks.asp | 345 | 142 |
| 326 | Museums http://www.doncaster.gov.uk/museums/index.htm | 149 | 142 |
| 327 | Our Plans http://www.doncaster.gov.uk/Living_in_Doncaster/Neighbourhoods/Planning/our_plans/Our_Plans.asp | 167 | 142 |
| 328 | Town & Parish Councils - D-G http://www.doncaster.gov.uk/Living_in_Doncaster/The_Mayor_and_Council/doncasters_councillors/town_parish_D-G.asp | 617 | 141 |
| 329 | Help with downloading http://www.doncaster.gov.uk/Help_with_downloading/Help_with_downloading.asp | 142 | 141 |
| 330 | Animal Health http://www.doncaster.gov.uk/Living_in_Doncaster/Environment/Animals/Animal_Health.asp | 154 | 141 |
| 331 | Out of School, Post-16 and Adult Education Information http://www.doncaster.gov.uk/Learning_in_Doncaster/Out_of_School_and_Post_16/Out_of_School_Post-16_Adult_Education.asp | 167 | 140 |
| 332 | Aerial Photography Doncaster Council http://www.doncaster.gov.uk/Living_in_Doncaster/The_Mayor_and_Council/Council_Dir/corporate_services/info_and_comm/strategy_projects/Geographic_Information/Aerial_Photography.asp | 165 | 140 |
| 333 | Active Doncaster http://www.doncaster.gov.uk/Leisure_in_Doncaster/active_doncaster/Active_Doncaster.asp | 152 | 140 |
| 334 | Roadworks Map http://www.doncaster.gov.uk/Living_in_Doncaster/highways_streets_transport/road_works/roadworks_map.asp | 159 | 139 |
| 335 | Homeless http://www.doncaster.gov.uk/Living_in_Doncaster/Homes_and_Housing/Homeless_Advice/Homeless.asp | 143 | 139 |
| 336 | Leisure in Doncaster http://www.doncaster.gov.uk/leisure_in_doncaster/leisure_in_doncaster.asp | 157 | 138 |
| 337 | Licence Directory Page http://www.doncaster.gov.uk/Working_in_Doncaster/Licensing/Licences/Complete_list_of_licences.asp | 197 | 138 |

| | | | |
|-----|---|---------|-----|
| 338 | School Admissions http://www.doncaster.gov.uk/Learning_in_Doncaster/pupil_and_parent/Admissions/school_admissions.asp | 192 | 138 |
| 339 | Mental Capacity Act 2005 - A Basic Introduction http://www.doncaster.gov.uk/Health_and_Social_Care/caring_for_our_adults/Mental_Capacity_Act/Mental_Capacity_Act_-_A_Basic_Introduction.asp | 161 | 138 |
| 340 | Town & Parish Councils - T-Z http://www.doncaster.gov.uk/Living_in_Doncaster/The_Mayor_and_Council/doncasters_councillors/town_parish_T-Z.asp | 604 | 137 |
| 341 | Public Consultation - 2009 http://www.doncaster.gov.uk/Have_your_say/public_consultations/Public_Consultation_-_2009.asp | 156 | 137 |
| 342 | Care Homes in Doncaster for older people http://www.doncaster.gov.uk/Health_and_Social_Care/caring_for_our_adults/Older_people/Care_Homes_in_Doncaster.asp | 166 | 137 |
| 343 | Search for schools in Doncaster http://www.doncaster.gov.uk/db/Schools/nohits.asp | 417 | 136 |
| 344 | Central Reference Library http://www.doncaster.gov.uk/Leisure_in_Doncaster/Libraries/central_library/Central_Reference_Library.asp | 174 | 136 |
| 345 | Public Rights of Way http://www.doncaster.gov.uk/Leisure_in_Doncaster/Outdoor_Life/Public_Rights_of_Way/Home_-_Rights_of_Way.asp | 171 | 136 |
| 346 | Library Events Calendar http://www.doncaster.gov.uk/Leisure_in_Doncaster/Libraries/Whats_On_in_Libraries/Library_Events_Calendar.asp | 149 | 136 |
| 347 | Emergency and Disaster Planning http://www.doncaster.gov.uk/Living_in_Doncaster/Neighbourhoods/emergency_planning/emergency_planning.asp | 137 | 136 |
| 348 | Shopping http://www.doncaster.gov.uk/Tourism/KioskRoot/shopping/Shopping.asp | 130,372 | 135 |
| 349 | Town & Parish Councils - S http://www.doncaster.gov.uk/Living_in_Doncaster/The_Mayor_and_Council/doncasters_councillors/town_parish_S.asp | 611 | 135 |
| 350 | Recycling A to Z http://www.doncaster.gov.uk/Living_in_Doncaster/Environment/Recycling_Rubbish_and_Waste/Recycling/Recycling_A_to_Z.asp | 146 | 135 |
| 351 | Trade Waste http://www.doncaster.gov.uk/Living_in_Doncaster/Environment/Recycling_Rubbish_and_Waste/Waste_Disposal/Trade_Waste.asp | 153 | 135 |
| 352 | Livestock- registration, movement, identification and record keeping http://www.doncaster.gov.uk/Living_in_Doncaster/Environment/Animals/Livestock-Registration_-_Movement_-_identification_and_tracing.asp | 313 | 135 |
| 353 | Decent Homes Standard http://www.doncaster.gov.uk/Living_in_Doncaster/Homes_and_Housing/Decent_Homes/Decent_Homes_Standard.asp | 139 | 135 |
| 354 | Doncaster Metropolitan Borough Council Cusworth Hall http://www.doncaster.gov.uk/cusworthhall/ | 148 | 134 |
| 355 | Arts and Culture http://www.doncaster.gov.uk/Leisure_in_Doncaster/Arts_and_Culture/Arts_and_Culture.asp | 190 | 134 |
| 356 | Planning Services http://www.doncaster.gov.uk/Services/Planning_Services.asp | 168 | 134 |
| 357 | Doncaster Electoral Boundaries Map Doncaster Council http://www.doncaster.gov.uk/Living_in_Doncaster/The_Mayor_and_Council/voting_elections_democracy/map.asp | 153 | 133 |
| 358 | Frequently Asked Questions - My Doncaster http://www.doncaster.gov.uk/My_Doncaster/Frequently_Asked_Questions_-_My_Doncaster.asp | 149 | 133 |
| 359 | Doncaster Music Service http://www.doncaster.gov.uk/Learning_in_Doncaster/pupil_and_parent/Doncaster_Music_Service/Doncaster_Music_Service.asp | 154 | 132 |
| 360 | Learning and Behaviour Support Service http://www.doncaster.gov.uk/Learning_in_Doncaster/pupil_and_parent/Learning_and_Behaviour_Support_Service/Learning_and_behaviour_support_service.asp | 140 | 132 |
| 361 | Land Charges - Search Fees Doncaster Council http://www.doncaster.gov.uk/living_in_doncaster/neighbourhoods/planning/land_charges/land_charges_-_search_fees.asp | 133 | 132 |
| 362 | Doncaster Councillors and the Council Chamber http://www.doncaster.gov.uk/Living_in_Doncaster/The_Mayor_and_Council/doncasters_councillors/Doncaster_Councillors_and_the_Council_Chamber.asp | 142 | 132 |
| 363 | 2009: Professional Learning http://www.doncaster.gov.uk/Learning_in_Doncaster/Teacher_and_School/Professional_Learning/2009_-_Professional_Learning.asp | 144 | 132 |
| 364 | Information About Mobility Travel Passes http://www.doncaster.gov.uk/Living_in_Doncaster/Homes_and_Housing/Help_with_Housing_Costs/Mobility_Travel_Passes.asp | 185 | 132 |
| 365 | Invest in Doncaster http://www.doncaster.gov.uk/Working_in_Doncaster/Invest_in_Doncaster/Invest_in_Doncaster.asp | 144 | 131 |

| | | | |
|-----|--|-----|-----|
| 366 | Supporting People http://www.doncaster.gov.uk/Health_and_Social_Care/caring_for_our_adults/Supporting_People/Supporting_People.asp | 141 | 131 |
| 367 | Safeguarding and Standards Service http://www.doncaster.gov.uk/Health_and_Social_Care/caring_for_our_children/Child_Protection/Safeguarding_and_Standards_Service.asp | 155 | 131 |
| 368 | Lost and Stray Dogs http://www.doncaster.gov.uk/Living_in_Doncaster/Environment/Animals/Dog_Control/Lost_and_Stray_Dogs.asp | 138 | 131 |
| 369 | Recycling Centres Map http://www.doncaster.gov.uk/Living_in_Doncaster/Environment/Recycling_Rubbish_and_Waste/recycling_facilities/Recycling_Centres_Map.asp | 135 | 131 |
| 370 | http://www.doncaster.gov.uk/hd/LogOff.asp | 131 | 130 |
| 371 | FLAG - Fly Tipping, Abandoned Cars and Graffiti http://www.doncaster.gov.uk/Living_in_Doncaster/Environment/Recycling_Rubbish_and_Waste/FLAG/Litter_abandoned_cars_and_graffiti.asp | 135 | 130 |
| 372 | DMBC Housing Home Services http://www.doncaster.gov.uk/hd/default.htm | 130 | 130 |
| 373 | Doncaster Council Recycle Christmas http://www.doncaster.gov.uk/recyclechristmas/ | 182 | 130 |
| 374 | Frequently Asked Questions - Household Bulky Items http://www.doncaster.gov.uk/Living_in_Doncaster/Environment/Recycling_Rubbish_and_Waste/Waste_Disposal/Frequently_Asked_Questions_-_Household_Bulky_Items.asp | 149 | 129 |
| 375 | Museum Loans Service http://www.doncaster.gov.uk/Leisure_in_Doncaster/Museums_and_history/Museums/Loans_Service.asp | 149 | 129 |
| 376 | Doncaster County Court http://www.doncaster.gov.uk/Advice_and_Benefits/The_Law_Victims_and_Courts/Doncaster_County_Court.asp | 135 | 129 |
| 377 | New Deal for Communities http://www.doncaster.gov.uk/Living_in_Doncaster/Neighbourhoods/New_Deal/New_Deal_for_Communities.asp | 133 | 129 |
| 378 | Are you safe? http://www.doncaster.gov.uk/Health_and_Social_Care/caring_for_our_adults/learning_disabilities_adults/Are_you_safe.asp | 199 | 128 |
| 379 | Thorne Sports Centre - Fitness Suite http://www.doncaster.gov.uk/Leisure_in_Doncaster/Sports_and_games/Sports_and_leisure_centres/Thorne_Sports_Centre/Thorne_Sports_Centre_-_Fitness_Suite.asp | 138 | 128 |
| 380 | Council Job Vacancies http://www.doncaster.gov.uk/Services/Council_Job_Vacancies.asp | 149 | 128 |
| 381 | I have received a Parking Ticket what shall I do next? http://www.doncaster.gov.uk/Living_in_Doncaster/highways_streets_transport/Parking_Services/I_have_received_a_Parking_Ticket.asp | 136 | 127 |
| 382 | Town & Parish Councils - C http://www.doncaster.gov.uk/Living_in_Doncaster/The_Mayor_and_Council/doncasters_councillors/town_parish_C.asp | 595 | 127 |
| 383 | Learning Disability Service http://www.doncaster.gov.uk/Health_and_Social_Care/caring_for_our_adults/learning_disabilities_adults/Learning_Disability_Service.asp | 145 | 127 |
| 384 | Council Tax Leaflets http://www.doncaster.gov.uk/Living_in_Doncaster/Homes_and_Housing/Council_Tax/Leaflets.asp | 137 | 127 |
| 385 | Housing & Council Tax Benefits - Frequently Asked Questions http://www.doncaster.gov.uk/Living_in_Doncaster/Homes_and_Housing/Help_with_Housing_Costs/Housing_Council_Tax_Benefits_FAQ/Housing_and_Council_Tax_Benefits_-_FAQ.asp | 146 | 127 |
| 386 | Town & Parish Councils - H-L http://www.doncaster.gov.uk/Living_in_Doncaster/The_Mayor_and_Council/doncasters_councillors/town_parish_H-L.asp | 599 | 127 |
| 387 | Cusworth Park http://www.doncaster.gov.uk/Leisure_in_Doncaster/Museums_and_history/Cusworth_Hall_and_Park/Cusworth_Park/Cusworth_Park.asp | 352 | 126 |
| 388 | Health & Advice Links http://www.doncaster.gov.uk/Health_and_Social_Care/Health_Links/Health_and_Advice_Links.asp | 131 | 126 |
| 389 | Doncaster Council Recycle Christmas http://www.doncaster.gov.uk/recyclechristmas/index.htm | 150 | 126 |
| 390 | Adwick Leisure Centre - Fitness classes http://www.doncaster.gov.uk/Leisure_in_Doncaster/Sports_and_games/Sports_and_leisure_centres/Adwick_Leisure_Centre/Adwick_Leisure_Centre_-_Fitness_classes.asp | 137 | 126 |
| 391 | Are You Having Difficulty Paying? http://www.doncaster.gov.uk/Living_in_Doncaster/Homes_and_Housing/Council_Tax/Are_You_Having_Difficulty_Paying.asp | 129 | 126 |
| 392 | Schemes and Projects Transport Unit http://www.doncaster.gov.uk/Living_in_Doncaster/highways_streets_transport/schemes_and_projects/Schemes_and_Projects_Transport_Unit.asp | 130 | 125 |
| 393 | Doncaster Council's Constitution http://www.doncaster.gov.uk/living_in_doncaster/the_mayor_and_council/council_plans/doncaster_mbcconstitution.asp | 134 | 125 |

| | | | |
|-----|---|-----|-----|
| 394 | Types of Tenders http://www.doncaster.gov.uk/living_in_doncaster/the_mayor_and_council/supplying_the_council/tenders/types_of_tenders.asp | 142 | 125 |
| 395 | Building Control Application Forms Doncaster Council http://www.doncaster.gov.uk/Living_in_Doncaster/Neighbourhoods/Planning/building_control/Application_Forms.asp | 149 | 125 |
| 396 | Government funded training Programs for pre and post 16 year olds http://www.doncaster.gov.uk/Working_in_Doncaster/Bentley_Training_Centre/Government_Funded_training_Programs_for_pre_16_year_olds.asp | 128 | 125 |
| 397 | Outdoor Life http://www.doncaster.gov.uk/Leisure_in_Doncaster/Outdoor_Life/Outdoor_Life.asp | 129 | 124 |
| 398 | MOT Testing http://www.doncaster.gov.uk/Living_in_Doncaster/highways_streets_transport/Vehicle_Testing/MOT_testing.asp | 133 | 124 |
| 399 | Pest Control http://www.doncaster.gov.uk/Living_in_Doncaster/Environment/Animals/Pest_Control_-_Environmental_Protection_Services.asp | 135 | 124 |
| 400 | Happy or not? Tell us what you think http://www.doncaster.gov.uk/Have_your_say/customer_services/customer_care.asp | 125 | 124 |
| 401 | Events at Doncaster Museum and Art Gallery http://www.doncaster.gov.uk/Leisure_in_Doncaster/Museums_and_history/Museums/Events_at_Doncaster_Museum_and_Art_Gallery.asp | 133 | 124 |
| 402 | The Role of the Principal Safety Officer http://www.doncaster.gov.uk/Advice_and_Benefits/chs/role_pso.asp | 140 | 124 |
| 403 | Community Safety http://www.doncaster.gov.uk/Living_in_Doncaster/Neighbourhoods/Community_Safety/Community_Safety.asp | 133 | 123 |
| 404 | Blue badge scheme http://www.doncaster.gov.uk/Health_and_Social_Care/caring_for_our_adults/Physical_disabilities_adults/Blue_badge_scheme.asp | 144 | 123 |
| 405 | Other Library Departments http://www.doncaster.gov.uk/Leisure_in_Doncaster/Libraries/other_library_departments/Other_departments.asp | 130 | 123 |
| 406 | Public Health - Noise http://www.doncaster.gov.uk/Living_in_Doncaster/Environment/Pollution/Noise/Public_Health_Noise.asp | 129 | 123 |
| 407 | index http://www.doncaster.gov.uk/spiritawards/ | 136 | 122 |
| 408 | Crookhill Park Golf Course - Prices 2009/10 http://www.doncaster.gov.uk/Leisure_in_Doncaster/Sports_and_games/Sports_and_leisure_centres/Crookhill_Park_Golf/Crookhill_Park_Golf_Course_-_Prices.asp | 132 | 122 |
| 409 | Challenging Your Penalty Charge Notice http://www.doncaster.gov.uk/Living_in_Doncaster/highways_streets_transport/Parking_Services/Challenging_Your_Penalty_Notice.asp | 131 | 122 |
| 410 | Teacher Vacancies Application Forms http://www.doncaster.gov.uk/Jobs_and_Careers/Teacher_Vacancies/Teacher_Vacancies_Application_Forms.asp | 129 | 122 |
| 411 | Frequently Asked Questions - Pest Control http://www.doncaster.gov.uk/Living_in_Doncaster/Environment/Animals/Frequently_Asked_Questions_-_Pest_Control.asp | 143 | 122 |
| 412 | Edlington Sports Centre - Swimming Programme (Term Time) http://www.doncaster.gov.uk/Leisure_in_Doncaster/Sports_and_games/Sports_and_leisure_centres/Edlington_Sports_Centre/Edlington_Sports_Centre_-_Swimming_Programme_(Term_Time)_2008-09.asp | 132 | 121 |
| 413 | Sheffield Members http://www.doncaster.gov.uk/Working_in_Doncaster/South_Yorkshire_Motor_Trade_Business_Partnership/Approved_Members/Sheffield_Members.asp | 136 | 121 |
| 414 | Countryside Activities http://www.doncaster.gov.uk/Leisure_in_Doncaster/Outdoor_Life/countryside_activities/Countryside_Activities.asp | 129 | 121 |
| 415 | Community and Advice Links http://www.doncaster.gov.uk/Advice_and_Benefits/community_links/Community_and_Advice_Links.asp | 122 | 121 |
| 416 | Together Information Exchange (TIE) http://www.doncaster.gov.uk/Health_and_Social_Care/caring_for_our_children/tie/Together_Information_Exchange.asp | 155 | 121 |
| 417 | Frequently Asked Questions - Elections - Registration http://www.doncaster.gov.uk/Living_in_Doncaster/The_Mayor_and_Council/voting_elections_democracy/Frequently_Asked_Questions_-_Elections_-_Registration.asp | 130 | 121 |
| 418 | Children's Rights Services for children and young people in public care http://www.doncaster.gov.uk/Health_and_Social_Care/caring_for_our_children/Childrens_Rights/rights_service_children.asp | 148 | 121 |
| 419 | Guidance on smokefree legislation in England http://www.doncaster.gov.uk/Living_in_Doncaster/Environment/envirn_health/Smokefree_Doncaster/New_legislation_on_smokefree_workplaces.asp | 129 | 121 |
| 420 | Higher Education Student Support http://www.doncaster.gov.uk/Learning_in_Doncaster/Out_of_School_and_Post_16/Student_Support/Higher_Education_Student_Support.asp | 124 | 120 |
| 421 | Leaflets and guides http://www.doncaster.gov.uk/Living_in_Doncaster/Homes_and_Housing/Help_with_Housing_Costs/Housing_Benefit_Leaflets.asp | 137 | 120 |

| | | | |
|-----|--|-------|-----|
| 422 | Rossington Sports Centre http://www.doncaster.gov.uk/leisure_in_doncaster/sports_and_games/sports_and_leisure_centres/rossington_sports_centre/rossington_sports_centre.asp | 137 | 120 |
| 423 | Rose Hill Crematorium http://www.doncaster.gov.uk/Living_in_Doncaster/Cemeteries_Crematorium/Rosehill_Crematorium.asp | 131 | 119 |
| 424 | Domestic Violence http://www.doncaster.gov.uk/living_in_doncaster/neighbourhoods/community_safety/crime_in_doncaster/domestic_violence.asp | 165 | 119 |
| 425 | Travel http://www.doncaster.gov.uk/Tourism/KioskRoot/links/Travel.asp | 5,811 | 119 |
| 426 | Doncaster Build http://www.doncaster.gov.uk/Working_in_Doncaster/Doncaster_Build/Doncaster_Build.asp | 122 | 119 |
| 427 | Trading Standards Consumer Advice http://www.doncaster.gov.uk/Working_in_Doncaster/Trading_Standards/Trading_Standards_Consumer_Advice.asp | 138 | 119 |
| 428 | Licence - Street Works (aka Section 50 Licence) http://www.doncaster.gov.uk/Living_in_Doncaster/highways_streets_transport/highways_licences/Licence_-_Street_Works_(aka_Section_50_Licence).asp | 141 | 119 |
| 429 | Crime in Doncaster http://www.doncaster.gov.uk/Living_in_Doncaster/Neighbourhoods/Community_Safety/crime_in_doncaster/Crime_in_Doncaster.asp | 126 | 118 |
| 430 | Hatfield Water Park - Activity Prices and Opening Hours 2009/10 http://www.doncaster.gov.uk/Leisure_in_Doncaster/Sports_and_games/Sports_and_leisure_centres/Hatfield_Water_Park/Hatfield_Water_Park_-_Prices_2009_10.asp | 134 | 118 |
| 431 | Pupil Support and Transport Section http://www.doncaster.gov.uk/Learning_in_Doncaster/pupil_and_parent/Education_transport/Transport_and_Pupil_Support.asp | 125 | 118 |
| 432 | Frequently Asked Questions - SmartWater http://www.doncaster.gov.uk/Living_in_Doncaster/Neighbourhoods/Community_Safety/what_we_do/Frequently_Asked_Questions_-_SmartWater.asp | 120 | 118 |
| 433 | Carcroft Motorcycle Park http://www.doncaster.gov.uk/Living_in_Doncaster/Neighbourhoods/NorthWest/Greater_Askern_NMA/Carcroft_Motorcycle_Park.asp | 135 | 118 |
| 434 | This guide is intended to be an easy and straightforward guide to how the Council makes decisions which affect the people living in Doncaster http://www.doncaster.gov.uk/about/chamber/aGuidetoDecisionMaking.htm | 124 | 117 |
| 435 | Roadworks Report http://www.doncaster.gov.uk/living_in_doncaster/highways_streets_transport/road_works/roadworks_report.asp | 130 | 117 |
| 436 | Events http://www.doncaster.gov.uk/Advice_and_Benefits/economic_downturn/Events.asp | 118 | 117 |
| 437 | Special Educational Needs http://www.doncaster.gov.uk/Learning_in_Doncaster/pupil_and_parent/special_education_needs/Special_Educational_Needs.asp | 129 | 117 |
| 438 | Building Schools for the Future (BSF) http://www.doncaster.gov.uk/Learning_in_Doncaster/pupil_and_parent/schools_in_doncaster/BSF/Building_Schools_for_the_Future.asp | 131 | 116 |
| 439 | Our Housing Plans http://www.doncaster.gov.uk/Living_in_Doncaster/Homes_and_Housing/our_housing_plans/Our_housing_plans.asp | 119 | 116 |
| 440 | Doncaster Metropolitan Borough Council Recycling http://www.doncaster.gov.uk/recycling/index.htm | 118 | 116 |
| 441 | Doncaster Metropolitan Borough Council Recycling http://www.doncaster.gov.uk/recycling/ | 129 | 116 |
| 442 | Thorne Sports Centre - Prices 2009/10 http://www.doncaster.gov.uk/Leisure_in_Doncaster/Sports_and_games/Sports_and_leisure_centres/Thorne_Sports_Centre/Thorne_Sports_Centre_-_Prices_2009-10.asp | 127 | 116 |
| 443 | Success Doncaster http://www.doncaster.gov.uk/Working_in_Doncaster/Business_Links/LEGI_(Local_Enterprise_Growth_Initiative).asp | 120 | 115 |
| 444 | Requesting items http://www.doncaster.gov.uk/Leisure_in_Doncaster/Libraries/joining_and_membership/Requesting_items.asp | 120 | 115 |
| 445 | Bins http://www.doncaster.gov.uk/Services/Bins.asp | 126 | 115 |
| 446 | Services for Customers with Special Needs http://www.doncaster.gov.uk/Living_in_Doncaster/Homes_and_Housing/Council_Tax/Services_for_Customers_with_Special_Needs.asp | 116 | 115 |
| 447 | Climate Change http://www.doncaster.gov.uk/Living_in_Doncaster/Environment/Climate_Change/Climate_Change.asp | 122 | 115 |
| 448 | West What's On http://www.doncaster.gov.uk/Living_in_Doncaster/Neighbourhoods/NorthWest/West_Whats_On/West_Whats_On.asp | 154 | 114 |
| 449 | Registering A Death http://www.doncaster.gov.uk/Living_in_Doncaster/Births_Deaths_and_Marriages/Registering_A_Death.asp | 122 | 114 |

| | | | |
|-----|---|-----|-----|
| 450 | SureStart Children's Centres http://www.doncaster.gov.uk/Health_and_Social_Care/caring_for_our_children/Early_Years_and_Childcare_Service/Surestart_and_Family_Centres.asp | 151 | 114 |
| 451 | Pupil Referral Units http://www.doncaster.gov.uk/Learning_in_Doncaster/pupil_and_parent/Learning_and_Behaviour_Support_Service/Pupil_Referral_Units/Pupil_Referral_Units.asp | 124 | 114 |
| 452 | Serious Case Reviews http://www.doncaster.gov.uk/health_and_social_care/caring_for_our_children/safeguarding_and_standards/safeguarding_children_board/serious_case_reviews.asp | 137 | 114 |
| 453 | Dog Fouling & the Law - Don't risk a Â£1000 fine http://www.doncaster.gov.uk/Living_in_Doncaster/Environment/Animals/Dog_Control/Dog_Fouling_and_the_Law.asp | 137 | 113 |
| 454 | Get Doncaster Walking http://www.doncaster.gov.uk/Leisure_in_Doncaster/Outdoor_Life/countryside_activities/Walking_For_Health.asp | 138 | 113 |
| 455 | Mortgage Rescue Scheme http://www.doncaster.gov.uk/Living_in_Doncaster/Homes_and_Housing/Mortgage_Rescue_Scheme/Mortgage_Rescue_Scheme.asp | 118 | 113 |
| 456 | The Civic Office http://www.doncaster.gov.uk/Living_in_Doncaster/The_Mayor_and_Council/doncasters_councillors/The_Civic_Office.asp | 122 | 113 |
| 457 | Civic Theatre Layout http://www.doncaster.gov.uk/Leisure_in_Doncaster/Arts_and_Culture/Civic_theatre/Civic_Theatre_Layout.asp | 118 | 112 |
| 458 | Voter Registration Form http://www.doncaster.gov.uk/Living_in_Doncaster/The_Mayor_and_Council/voting_elections_democracy/Voter_Registration_Form.asp | 118 | 112 |
| 459 | Resources http://www.doncaster.gov.uk/Living_in_Doncaster/The_Mayor_and_Council/Council_Dir/Resources/Resources.asp | 118 | 112 |
| 460 | Events in Parks and Open Spaces 2009 http://www.doncaster.gov.uk/Leisure_in_Doncaster/Outdoor_Life/Parks_and_Open_Spaces/Events_in_Parks_and_Open_Spaces_2009.asp | 119 | 112 |
| 461 | Website help pages http://www.doncaster.gov.uk/help/website_help.asp | 119 | 112 |
| 462 | Traffic Management Act http://www.doncaster.gov.uk/Living_in_Doncaster/highways_streets_transport/traffic_management/Traffic_Management_Act.asp | 117 | 112 |
| 463 | Secondary Admissions http://www.doncaster.gov.uk/Learning_in_Doncaster/pupil_and_parent/Admissions/Secondary_Admissions.asp | 152 | 112 |
| 464 | Becoming a Learning Mentor http://www.doncaster.gov.uk/Learning_in_Doncaster/Teacher_and_School/Learning_Mentors/Becoming_a_Mentor.asp | 118 | 111 |
| 465 | Historic Buildings http://www.doncaster.gov.uk/Leisure_in_Doncaster/Museums_and_history/historic_buildings/Historic_Buildings.asp | 119 | 111 |
| 466 | Harassment and Illegal Eviction http://www.doncaster.gov.uk/Living_in_Doncaster/Homes_and_Housing/Renting_a_House/private_properties/Harassment_and_Illegal_Eviction.asp | 129 | 111 |
| 467 | Doncaster Community Web Site - Maps http://www.doncaster.gov.uk/db/maps/mapsreg.htm | 115 | 111 |
| 468 | School and Establishments Telephone Directory http://www.doncaster.gov.uk/Learning_in_Doncaster/pupil_and_parent/schools_in_doncaster/School_and_Establishments_Telephone_Directory.asp | 115 | 111 |
| 469 | Council Tax Appeals http://www.doncaster.gov.uk/Living_in_Doncaster/Homes_and_Housing/Council_Tax/Appeals.asp | 112 | 110 |
| 470 | Pet Travel Scheme http://www.doncaster.gov.uk/Living_in_Doncaster/Environment/Animals/Pet_Passport_Scheme.asp | 185 | 110 |
| 471 | Countryside Activities October to December 2009 http://www.doncaster.gov.uk/Leisure_in_Doncaster/Outdoor_Life/countryside_activities/Countryside_Activities_October_to_December_2009.asp | 127 | 110 |
| 472 | Cabinet http://www.doncaster.gov.uk/Living_in_Doncaster/The_Mayor_and_Council/doncasters_councillors/Cabinet.asp | 118 | 110 |
| 473 | Flood Risk Assessments http://www.doncaster.gov.uk/Living_in_Doncaster/Neighbourhoods/Planning/development_control/online_documents/Flood_Risk_Assessments.asp | 137 | 110 |
| 474 | health effects http://www.doncaster.gov.uk/airq/health_effects/health_effects.asp | 120 | 110 |
| 475 | Frequently Asked Questions - Jobshops http://www.doncaster.gov.uk/Jobs_and_Careers/Job_Seekers_Advice/Frequently_Asked_Questions_-_Jobshops.asp | 115 | 110 |
| 476 | Fostering and Adoption http://www.doncaster.gov.uk/Health_and_Social_Care/caring_for_our_children/Fostering_and_Adoption/fostering_and_adoption.asp | 114 | 110 |
| 477 | Weights and measures http://www.doncaster.gov.uk/Working_in_Doncaster/Trading_Standards/Weights_and_measures.asp | 118 | 110 |

| | | | |
|-----|--|-----|-----|
| 478 | Doncaster UDP Document http://www.doncaster.gov.uk/Living_in_Doncaster/Neighbourhoods/Planning/our_plans/Doncaster_UDP_Document.asp | 146 | 109 |
| 479 | Conservation Areas Map Doncaster Council http://www.doncaster.gov.uk/Living_in_Doncaster/Neighbourhoods/Planning/urban_renaissance/design_and_conservation/Conservation_Areas_in_Doncaster/map.asp | 121 | 109 |
| 480 | Community Alarm Service http://www.doncaster.gov.uk/Living_in_Doncaster/Homes_and_Housing/community_alarms/Alarm_service.asp | 112 | 109 |
| 481 | Road Closures and Diversions http://www.doncaster.gov.uk/Living_in_Doncaster/highways_streets_transport/road_works/Roads_and_highways_-_closures_and_diversions.asp | 121 | 109 |
| 482 | Private Sector Housing Information http://www.doncaster.gov.uk/Living_in_Doncaster/Homes_and_Housing/Renting_a_House/private_properties/Private_Sector_Housing_Information.asp | 124 | 109 |
| 483 | Library closures for holidays and maintenance http://www.doncaster.gov.uk/Leisure_in_Doncaster/Libraries/joining_and_membership/Library_closures_for_holidays_and_maintenance.asp | 113 | 108 |
| 484 | Swimming Instruction http://www.doncaster.gov.uk/Leisure_in_Doncaster/Sports_and_games/Sports_and_leisure_centres/Swimming_Instruction/Swimming_Instruction.asp | 115 | 108 |
| 485 | Help during the economic downturn http://www.doncaster.gov.uk/Advice_and_Benefits/economic_downturn/Help_during_the_economic_downturn.asp | 109 | 108 |
| 486 | Bokashi Bins - Kitchen Composters http://www.doncaster.gov.uk/Living_in_Doncaster/Environment/Recycling_Rubbish_and_Waste/Recycling/Bokashi_Bins.asp | 119 | 108 |
| 487 | Educational Psychology http://www.doncaster.gov.uk/Learning_in_Doncaster/Teacher_and_School/educational_psychology/Education_Psychology.asp | 123 | 108 |
| 488 | Children and Young People's Plan http://www.doncaster.gov.uk/Health_and_Social_Care/caring_for_our_children/our_policies_and_plans/Children_and_Young_Peoples_Plan.asp | 116 | 108 |
| 489 | Assets and Property http://www.doncaster.gov.uk/Working_in_Doncaster/Assets_and_Property/Introduction_to_property_services.asp | 110 | 108 |
| 490 | Environmental Planning http://www.doncaster.gov.uk/Living_in_Doncaster/Neighbourhoods/Planning/environmental_planning/Environment_Planning.asp | 115 | 108 |
| 491 | Teaching Vacancies http://www.doncaster.gov.uk/jobs_and_careers/teacher_vacancies/teaching_vacancies.asp | 116 | 108 |
| 492 | Race: Legislation http://www.doncaster.gov.uk/Living_in_Doncaster/Equalities_and_cohesion/Race/Race_-_Legislation.asp | 122 | 107 |
| 493 | Road Safety Education http://www.doncaster.gov.uk/Living_in_Doncaster/highways_streets_transport/Road_Safety/Road_Safety_Education_Unit.asp | 112 | 107 |
| 494 | Council Tax Customer Service Charter http://www.doncaster.gov.uk/Living_in_Doncaster/Homes_and_Housing/Council_Tax/Council_Tax_Customer_Service_Charter.asp | 113 | 107 |
| 495 | Rossington Sports Centre Fitness Studio http://www.doncaster.gov.uk/Leisure_in_Doncaster/Sports_and_games/Sports_and_leisure_centres/Rossington_Sports_Centre/Rossington_Sports_Centre_New_Fitness_Studio.asp | 112 | 107 |
| 496 | Education Welfare Service http://www.doncaster.gov.uk/Learning_in_Doncaster/pupil_and_parent/cssws/Education_Welfare_Service.asp | 117 | 107 |
| 497 | Introduction to Standards Committee http://www.doncaster.gov.uk/Living_in_Doncaster/The_Mayor_and_Council/voting_elections_democracy/standards_committee/Standards_Committee.asp | 118 | 107 |
| 498 | Library Fees and Charges http://www.doncaster.gov.uk/Leisure_in_Doncaster/Libraries/joining_and_membership/Library_Fees_and_Charges.asp | 110 | 107 |
| 499 | Debt Counselling http://www.doncaster.gov.uk/Advice_and_Benefits/Advice_Support_and_Counselling/Debt_Counselling.asp | 114 | 107 |
| 500 | Enforcement http://www.doncaster.gov.uk/Living_in_Doncaster/Homes_and_Housing/Enforcement/Benefits_Fraud.asp | 108 | 107 |
| 501 | Our Plans Doncaster Council http://www.doncaster.gov.uk/Living_in_Doncaster/The_Mayor_and_Council/Council_Plans/our_plans.asp | 108 | 106 |
| 502 | Cycling in Doncaster http://www.doncaster.gov.uk/Living_in_Doncaster/highways_streets_transport/transportation/cycling/Cycling_in_Doncaster.asp | 128 | 106 |
| 503 | Metro Clean Staff Vacancies http://www.doncaster.gov.uk/Working_in_Doncaster/Metro_Clean/Staff_Vacancies.asp | 112 | 106 |
| 504 | Household Waste Recycling Centres Map http://www.doncaster.gov.uk/Living_in_Doncaster/Environment/Recycling_Rubbish_and_Waste/recycling_facilities/map.asp | 107 | 106 |
| 505 | Physical Disability Services http://www.doncaster.gov.uk/Health_and_Social_Care/caring_for_our_adults/Physical_disabilities_adults/Physical_Disability_Services.asp | 110 | 106 |

| | | | |
|-----|--|-----|-----|
| 506 | Safeguarding and Standards Service http://www.doncaster.gov.uk/Health_and_Social_Care/caring_for_our_children/Safeguarding_and_Standards/Safeguarding_and_Standards_Service.asp | 114 | 106 |
| 507 | Adwick Community Enterprise (ACE) http://www.doncaster.gov.uk/Health_and_Social_Care/caring_for_our_adults/learning_disabilities_adults/Adwick_Community_Enterprise.asp | 167 | 106 |
| 508 | Highway Network Management http://www.doncaster.gov.uk/Living_in_Doncaster/highways_streets_transport/highway_network_management/Highway_Network_Management.asp | 117 | 106 |
| 509 | Nightlife in Doncaster http://www.doncaster.gov.uk/leisure_in_doncaster/visit_doncaster/nightlife/nightlife_in_doncaster.asp | 112 | 106 |
| 510 | School Improvement Service http://www.doncaster.gov.uk/Learning_in_Doncaster/Teacher_and_School/School_Improvement_Service/Quality_Assurance.asp | 113 | 105 |
| 511 | St James Pool & Health Club - Fitness Classes http://www.doncaster.gov.uk/Leisure_in_Doncaster/Sports_and_games/Sports_and_leisure_centres/St_James/St_James_Pool_and_Health_Club_-_Fitness_Classes.asp | 121 | 105 |
| 512 | Energy and Sustainability Section http://www.doncaster.gov.uk/Living_in_Doncaster/Environment/EnergyEfficiency/Energy_Efficiency_Introduction.asp | 115 | 105 |
| 513 | Economy & Enterprise http://www.doncaster.gov.uk/Working_in_Doncaster/Economy_and_Enterprise/Economy_and_Enterprise.asp | 111 | 105 |
| 514 | Thorne Sports Centre - Fitness Classes http://www.doncaster.gov.uk/Leisure_in_Doncaster/Sports_and_games/Sports_and_leisure_centres/Thorne_Sports_Centre/Thorne_Sports_Centre_-_Fitness_classes.asp | 113 | 105 |
| 515 | DIY Courses http://www.doncaster.gov.uk/Working_in_Doncaster/Bentley_Training_Centre/DIY_Courses.asp | 109 | 105 |
| 516 | Local Land Charges and eSearch http://www.doncaster.gov.uk/Living_in_Doncaster/Neighbourhoods/Planning/Land_Charges/Local_Land_Charges.asp | 120 | 105 |
| 517 | Hatfield Water Park Outdoor Activity Centre Guide http://www.doncaster.gov.uk/Leisure_in_Doncaster/Sports_and_games/Sports_and_leisure_centres/Hatfield_Water_Park/Hatfield_Water_Park_Outdoor_Activity_Centre_Guide.asp | 114 | 104 |
| 518 | Hatfield Library http://www.doncaster.gov.uk/Leisure_in_Doncaster/Libraries/community_libraries/Hatfield_Library.asp | 586 | 104 |
| 519 | Tree Services http://www.doncaster.gov.uk/Living_in_Doncaster/Environment/trees/Tree_Services.asp | 109 | 104 |
| 520 | A Guide for Library Members http://www.doncaster.gov.uk/Leisure_in_Doncaster/Libraries/joining_and_membership/A_Guide_for_Library_Members.asp | 108 | 104 |
| 521 | Brodsworth Hall http://www.doncaster.gov.uk/Leisure_in_Doncaster/Visit_Doncaster/Local_attractions/Brodsworth_Hall.asp | 572 | 104 |
| 522 | Traffic Management http://www.doncaster.gov.uk/Living_in_Doncaster/highways_streets_transport/traffic_management/Traffic_Management.asp | 113 | 104 |
| 523 | http://www.doncaster.gov.uk/hd/dLogin.asp | 323 | 103 |
| 524 | Improving your area http://www.doncaster.gov.uk/Living_in_Doncaster/Homes_and_Housing/improving_your_area/Improving_your_area.asp | 103 | 103 |
| 525 | Local Wildlife and Geological Sites Map Doncaster Council http://www.doncaster.gov.uk/Living_in_Doncaster/Neighbourhoods/Planning/environmental_planning/Local_Sites/map.asp | 121 | 103 |
| 526 | Traffic Signals http://www.doncaster.gov.uk/Living_in_Doncaster/highways_streets_transport/traffic_signals/Traffic_Signals.asp | 105 | 103 |
| 527 | Product Safety http://www.doncaster.gov.uk/Working_in_Doncaster/Trading_Standards/Product_Safety.asp | 118 | 103 |
| 528 | Doncaster in Bloom 2009 http://www.doncaster.gov.uk/Leisure_in_Doncaster/Outdoor_Life/Doncaster_in_bloom/Doncaster_in_Bloom_2009.asp | 107 | 103 |
| 529 | Advice, Support & Counselling http://www.doncaster.gov.uk/Advice_and_Benefits/Advice_Support_and_Counselling/Advice-Support_and_Counselling.asp | 107 | 103 |
| 530 | Arts Service Networks http://www.doncaster.gov.uk/Leisure_in_Doncaster/Arts_and_Culture/Networks/Networks.asp | 118 | 103 |
| 531 | Local Housing Allowance Rates http://www.doncaster.gov.uk/Living_in_Doncaster/Homes_and_Housing/Help_with_Housing_Costs/Local_Housing_Allowance/Local_Housing_Allowance_Rates.asp | 121 | 103 |
| 532 | Public Health Team http://www.doncaster.gov.uk/Living_in_Doncaster/Environment/envirn_health/public_health_service/Public_health.asp | 126 | 103 |
| 533 | Learning Gateways http://www.doncaster.gov.uk/Learning_in_Doncaster/Out_of_School_and_Post_16/Learning_Gateways/Learning_Gateways.asp | 106 | 102 |

| | | | |
|-----|---|-----|-----|
| 534 | Changes To Parking Regulations And Enforcement http://www.doncaster.gov.uk/Living_in_Doncaster/highways_streets_transport/Parking_Services/Changes_To_Parking_Regulations_And_Enforcement.asp | 109 | 102 |
| 535 | Frequently Asked Questions - Fly-tipping and Fly-posting http://www.doncaster.gov.uk/Living_in_Doncaster/Environment/Recycling_Rubbish_and_Waste/Flytipping_and_Flyposting/Frequently_Asked_Questions_-_Fly-tipping_and_Fly-posting.asp | 114 | 101 |
| 536 | Licensing Act 2003 - Statement of Licensing Policy http://www.doncaster.gov.uk/Working_in_Doncaster/Licensing/Statement_of_Licensing_Policy.asp | 104 | 101 |
| 537 | Useful Education Links http://www.doncaster.gov.uk/Learning_in_Doncaster/Out_of_School_and_Post_16/Useful_Education_Links/Useful_Education_Links.asp | 109 | 101 |
| 538 | Trading on Doncaster Market http://www.doncaster.gov.uk/leisure_in_doncaster/shopping/markets/trading_on_doncaster_market.asp | 123 | 101 |
| 539 | Disability: Legislation http://www.doncaster.gov.uk/Living_in_Doncaster/Equalities_and_cohesion/Disability/Disability-_Legislation.asp | 102 | 101 |
| 540 | Looked after children http://www.doncaster.gov.uk/Health_and_Social_Care/caring_for_our_children/Looked_after_Children/Looked_after_children.asp | 112 | 101 |
| 541 | Libraries Map http://www.doncaster.gov.uk/Leisure_in_Doncaster/Libraries/community_libraries/map.asp | 107 | 101 |
| 542 | Maps http://www.doncaster.gov.uk/Tourism/KioskRoot/links/Maps.asp | 897 | 101 |
| 543 | Visit Doncaster http://www.doncaster.gov.uk/Leisure_in_Doncaster/Visit_Doncaster/Visit_Doncaster.asp | 115 | 101 |
| 544 | Physical Activity and Health http://www.doncaster.gov.uk/Leisure_in_Doncaster/active_doncaster/Physical_Activity_and_Health/Physical_Activity_and_Health.asp | 108 | 101 |
| 545 | What Is The Business Rate? http://www.doncaster.gov.uk/Working_in_Doncaster/Business_Rates/What_Is_The_Business_Rate.asp | 104 | 100 |
| 546 | Rossington Sports Centre - Prices 2009-10 http://www.doncaster.gov.uk/Leisure_in_Doncaster/Sports_and_games/Sports_and_leisure_centres/Rossington_Sports_Centre/Rossington_Sports_Centre_-_Prices.asp | 103 | 100 |
| 547 | Armthorpe Sports Centre Swimming Lessons http://www.doncaster.gov.uk/Leisure_in_Doncaster/Sports_and_games/Sports_and_leisure_centres/Armthorpe_Sports_Centre/Armthorpe_Sports_Centre_Swimming_Lessons.asp | 129 | 100 |
| 548 | Developers Panel http://www.doncaster.gov.uk/Living_in_Doncaster/Homes_and_Housing/Developers_Panel/Developers_Panel.asp | 109 | 100 |
| 549 | Operation Fly-Tipper http://www.doncaster.gov.uk/Living_in_Doncaster/Environment/Recycling_Rubbish_and_Waste/Flytipping_and_Flyposting/op_flytip.asp | 116 | 100 |
| 550 | Doncaster's Sustainable Borough Strategy http://www.doncaster.gov.uk/Living_in_Doncaster/The_Mayor_and_Council/Council_Plans/Doncasters_Borough_Strategy.asp | 102 | 100 |
| 551 | Discover Sandall Beat Wood http://www.doncaster.gov.uk/Leisure_in_Doncaster/Outdoor_Life/Woods_and_Country_Parks/Discover_Sandall_Beat_Wood.asp | 129 | 100 |
| 552 | Holiday Activities http://www.doncaster.gov.uk/Leisure_in_Doncaster/active_doncaster/Holiday_Activities/Holiday_Activities.asp | 107 | 100 |
| 553 | Frequently Asked Questions - Business Rates http://www.doncaster.gov.uk/Working_in_Doncaster/Business_Rates/Frequently_Asked_Questions_-_Business_Rates.asp | 105 | 100 |
| 554 | Health Services http://www.doncaster.gov.uk/Health_and_Social_Care/Health_Services/health_services.asp | 106 | 100 |
| 555 | Road and Highway Obstructions http://www.doncaster.gov.uk/Living_in_Doncaster/highways_streets_transport/highway_network_management/Roads_and_Highways_-_Obstructions.asp | 102 | 100 |
| 556 | Making a Complaint or a Comment http://www.doncaster.gov.uk/Living_in_Doncaster/Homes_and_Housing/Council_Tax/Making_a_Complaint_or_a_Comment.asp | 100 | 100 |
| 557 | Types of Tenders http://www.doncaster.gov.uk/Living_in_Doncaster/The_Mayor_and_Council/supplying_the_council/tenders/types_of_tenders.asp | 108 | 100 |
| 558 | Our Policies and Plans http://www.doncaster.gov.uk/Health_and_Social_Care/caring_for_our_adults/our_policies_and_plans/Our_Plans.asp | 108 | 100 |
| 559 | DtS Board http://www.doncaster.gov.uk/Working_in_Doncaster/DtS_Board/DtS_Board.asp | 102 | 99 |
| 560 | What is Common Assessment? http://www.doncaster.gov.uk/Health_and_Social_Care/caring_for_our_children/Common_Assessment_Framework/About_The_Common_Assessment_Framework.asp | 108 | 99 |
| 561 | Doncaster ReFurnish http://www.doncaster.gov.uk/Living_in_Doncaster/Environment/Recycling_Rubbish_and_Waste/recycling_facilities/Remove_Page.asp | 107 | 99 |

| | | | |
|-----|---|-----|----|
| 562 | Doctors, Dentists and Chemists http://www.doncaster.gov.uk/Health_and_Social_Care/Health_Services/Doctors-_Dentists_and_Chemists.asp | 107 | 99 |
| 563 | Town Centre, Lakeside & Lower Wheatley Neighbourhood http://www.doncaster.gov.uk/Living_in_Doncaster/Neighbourhoods/Central/Town_Centre/Town_Centre-_Lakeside_and_Lower_Wheatley_Neighbourhood.asp | 111 | 99 |
| 564 | LDF Employment and Housing Map Doncaster Council http://www.doncaster.gov.uk/Living_in_Doncaster/Neighbourhoods/Planning/Local_Development_Framework/LDF-Other_Development_Plan_Documents/map.asp | 129 | 99 |
| 565 | Professional Development Centre http://www.doncaster.gov.uk/Learning_in_Doncaster/Teacher_and_School/professional_development_centre/Professional_Development_Centre.asp | 102 | 98 |
| 566 | Cycle Lanes and Routes http://www.doncaster.gov.uk/Living_in_Doncaster/highways_streets_transport/transportation/cycling/Cycle_Lanes_and_Routes.asp | 112 | 98 |
| 567 | Out of Hours Emergency Social Services http://www.doncaster.gov.uk/Health_and_Social_Care/caring_for_our_adults/out_of_hours_service/Out_of_Hours_Emergency_Social_Services.asp | 104 | 98 |
| 568 | Jobseekers' information http://www.doncaster.gov.uk/Leisure_in_Doncaster/Libraries/Other_Library_Services/Jobseekers_information.asp | 107 | 98 |
| 569 | Waste Recycling Centres http://www.doncaster.gov.uk/Services/Waste_Recycling_Centres_.asp | 106 | 98 |
| 570 | Our Policies http://www.doncaster.gov.uk/Living_in_Doncaster/Environment/envirn_health/Regulation_and_Enforcement_Policies/Our_Policies.asp | 111 | 98 |
| 571 | Don Gorge Strategic Partnership http://www.doncaster.gov.uk/Living_in_Doncaster/Environment/Don_Gorge_Strategic_Partnership/Don_Gorge_Strategic_Partnership.asp | 100 | 98 |
| 572 | Healthy Schools Programme http://www.doncaster.gov.uk/Learning_in_Doncaster/pupil_and_parent/schools_in_doncaster/Healthy_Schools_Programme.asp | 105 | 98 |
| 573 | Fair Trading http://www.doncaster.gov.uk/Working_in_Doncaster/Trading_Standards/Fair_Trading.asp | 104 | 97 |
| 574 | Bonfire Night 2009 http://www.doncaster.gov.uk/Living_in_Doncaster/Environment/Pollution/Air/Bonfire_Night_2009.asp | 115 | 97 |
| 575 | Specialist Educational and Development Team (SpEDT) http://www.doncaster.gov.uk/Learning_in_Doncaster/pupil_and_parent/specialist_educational_teams/Specialist_Educational_and_Development_Team.asp | 101 | 97 |
| 576 | Active Involvement Strategy http://www.doncaster.gov.uk/Health_and_Social_Care/caring_for_our_children/our_policies_and_plans/Active_Involvement_Strategy.asp | 101 | 97 |
| 577 | Reed in Partnership http://www.doncaster.gov.uk/Jobs_and_Careers/Job_Seekers_Advice/Reed_in_Partnership.asp | 99 | 97 |
| 578 | Policies, Plans and Performance Doncaster Council http://www.doncaster.gov.uk/Living_in_Doncaster/The_Mayor_and_Council/Policies_Plans_and_Performance/Policies_Plans_and_Performance.asp | 111 | 97 |
| 579 | School Building Site Safety Awareness http://www.doncaster.gov.uk/Learning_in_Doncaster/Teacher_and_School/policies/School_Building_Site_Safety_Awareness.asp | 104 | 97 |
| 580 | Transportation http://www.doncaster.gov.uk/Living_in_Doncaster/highways_streets_transport/transportation/Roads_and_transport.asp | 104 | 96 |
| 581 | Highways and street lighting emergency contacts http://www.doncaster.gov.uk/Living_in_Doncaster/highways_streets_transport/emergency_contact/Highways_and_street_lighting_emergency_contacts.asp | 98 | 96 |
| 582 | Frequently Asked Questions - Planning Permission Doncaster Council http://www.doncaster.gov.uk/Living_in_Doncaster/Neighbourhoods/Planning/planning_system/Frequently_Asked_Questions_-_Planning_Permission.asp | 109 | 96 |
| 583 | Overview and Scrutiny at Doncaster Council http://www.doncaster.gov.uk/Living_in_Doncaster/The_Mayor_and_Council/voting_elections_democracy/Overview_and_Scrutiny/Scrutiny.asp | 104 | 96 |
| 584 | Warm Front Grant http://www.doncaster.gov.uk/Living_in_Doncaster/Environment/EnergyEfficiency/Warm_Front_Grant.asp | 105 | 96 |
| 585 | Revaluation 2010 http://www.doncaster.gov.uk/Working_in_Doncaster/Business_Rates/Revaluation_2010.asp | 96 | 96 |
| 586 | Empty Properties http://www.doncaster.gov.uk/Living_in_Doncaster/Homes_and_Housing/our_housing_plans/Empty_Properties.asp | 106 | 96 |
| 587 | Amateur Groups http://www.doncaster.gov.uk/Leisure_in_Doncaster/Arts_and_Culture/Amateur_Groups/Amateur_Groups.asp | 99 | 96 |
| 588 | Adoption http://www.doncaster.gov.uk/Health_and_Social_Care/caring_for_our_children/Fostering_and_Adoption/adoption/adoption.asp | 102 | 96 |
| 589 | Bridges http://www.doncaster.gov.uk/Living_in_Doncaster/highways_streets_transport/bridges/Bridges.asp | 110 | 96 |

| | | | |
|-----|--|----------------|------------|
| 590 | Doncaster Archives Index http://www.doncaster.gov.uk/Leisure_in_Doncaster/Libraries/Archives_Local_Studies/Doncaster_Archives_Index.asp | 113 | 96 |
| 591 | Pavements http://www.doncaster.gov.uk/Living_in_Doncaster/highways_streets_transport/roads_and_pavements/Pavements.asp | 100 | 95 |
| 592 | Schools Asset Management Plan http://www.doncaster.gov.uk/Working_in_Doncaster/Assets_and_Property/Schools_Asset_Management_Plan.asp | 97 | 95 |
| 593 | Footway Vehicular Crossing Application http://www.doncaster.gov.uk/Living_in_Doncaster/highways_streets_transport/roads_and_pavements/Footway_Vehicular_Crossing_Facility.asp | 101 | 95 |
| 594 | Young Carers http://www.doncaster.gov.uk/Health_and_Social_Care/caring_for_our_adults/Doncaster_Carers/Young_Carers/Young_Carers.asp | 95 | 95 |
| 595 | Health and Safety at work http://www.doncaster.gov.uk/Living_in_Doncaster/Environment/envirn_health/healthsafety_work/Health_and_Safety_Team.asp | 132 | 95 |
| 596 | How Are My Business Rates Calculated? http://www.doncaster.gov.uk/Working_in_Doncaster/Business_Rates/How_Are_My_Business_Rate_Calculated.asp | 99 | 95 |
| 597 | Support for Victims and Witnesses http://www.doncaster.gov.uk/Living_in_Doncaster/Neighbourhoods/Community_Safety/what_you_can_do/Witness_Support.asp | 96 | 95 |
| 598 | Askern and Campsall Sports Centre http://www.doncaster.gov.uk/leisure_in_doncaster/sports_and_games/sports_and_leisure_centres/askern_campsall_sports_centre/askern_and_campsall_sports_centre.asp | 112 | 95 |
| 599 | Hatfield Water Park Outdoor Activity Centre http://www.doncaster.gov.uk/leisure_in_doncaster/sports_and_games/sports_and_leisure_centres/hatfield_water_park/hatfield_water_park.asp | 118 | 95 |
| 600 | Doncaster Metropolitan Borough Council Romans on the Don http://www.doncaster.gov.uk/romansonthedon/index.htm | 97 | 95 |
| | Subtotal | 544,361 | N/A |
| | Total | 861,168 | N/A |